

\$259,000 - 212, 300 Marina Drive, Chestermere

MLS® #A2263973

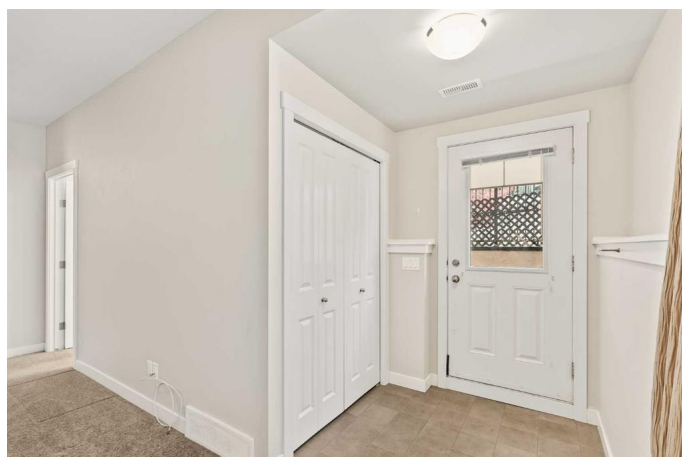
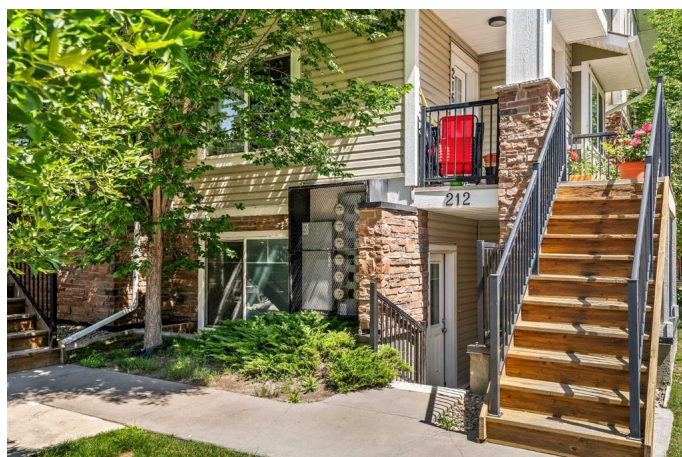
\$259,000

2 Bedroom, 1.00 Bathroom, 756 sqft

Residential on 0.00 Acres

Westmere, Chestermere, Alberta

Why rent when you can own for less and start building equity?! Welcome to #212 300 Marina Drive! This townhouse is perfect for first-time home buyers or investors. Located in the highly sought-after Chestermere Station complex, this location provides the perfect blend of comfort and convenience. Step into this exceptionally maintained single-level 2 bed, 1 bath unit that offers an open concept floor plan. Featuring a large living room, a good-sized kitchen with ample cabinet space and a peninsula island, large windows that provide an abundance of natural light, and a laundry room large enough for additional storage. This unit comes with one parking stall steps from your door and plenty of visitor parking for your guests. Located close to all of Chestermere's amenities, including shopping, restaurants, professional services, the beach, parks, walking and biking paths, as well as the rec center! Just a short drive to East Hills Shopping Center with Costco, Walmart, Cineplex, and much more. Book you're showing today to see the value in this townhome!



Built in 2012

Essential Information

MLS® # A2263973

Price \$259,000

Bedrooms 2

Bathrooms	1.00
Full Baths	1
Square Footage	756
Acres	0.00
Year Built	2012
Type	Residential
Sub-Type	Row/Townhouse
Style	Bungalow
Status	Active

Community Information

Address	212, 300 Marina Drive
Subdivision	Westmere
City	Chestermere
County	Chestermere
Province	Alberta
Postal Code	T1X0P6

Amenities

Amenities	Gazebo, Snow Removal, Trash, Visitor Parking
Parking Spaces	1
Parking	Stall

Interior

Interior Features	Kitchen Island, No Smoking Home
Appliances	Dishwasher, Dryer, Electric Stove, Microwave Hood Fan, Refrigerator, Washer, Window Coverings
Heating	Forced Air
Cooling	None
Basement	None

Exterior

Exterior Features	Private Entrance
Lot Description	Landscaped, See Remarks
Roof	Asphalt Shingle
Construction	Stone, Vinyl Siding, Wood Frame
Foundation	Poured Concrete

Additional Information

Date Listed	October 11th, 2025
Days on Market	1
Zoning	TC

Listing Details

Listing Office	RE/MAX First
----------------	--------------

Data is supplied by Pillar 9â„¢ MLSÂ® System. Pillar 9â„¢ is the owner of the copyright in its MLSÂ® System. Data is deemed reliable but is not guaranteed accurate by Pillar 9â„¢. The trademarks MLSÂ®, Multiple Listing ServiceÂ® and the associated logos are owned by The Canadian Real Estate Association (CREA) and identify the quality of services provided by real estate professionals who are members of CREA. Used under license.