

# \$747,364 - 50 Saddlebred Place, Cochrane

MLS® #A2263566

**\$747,364**

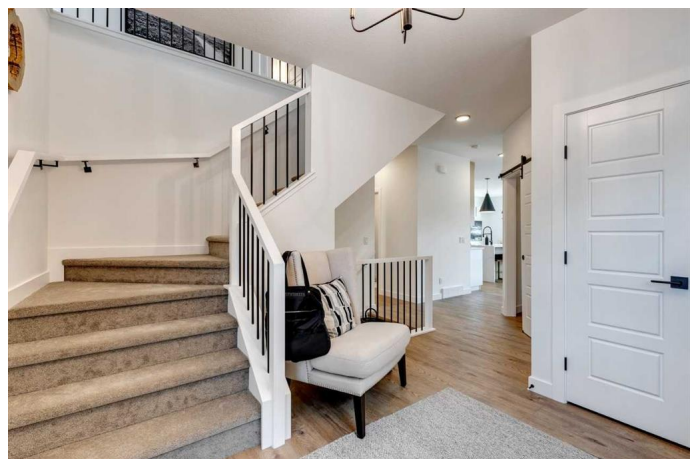
3 Bedroom, 3.00 Bathroom, 2,434 sqft  
Residential on 0.11 Acres

Heartland, Cochrane, Alberta

Step into the Beaumont â€” a beautifully designed home that blends luxury and practicality.

Built by a trusted builder with over 70 years of experience, this home showcases on-trend, designer-curated interior selections tailored for a home that feels personalized to you. Energy efficient and smart home features, plus moving concierge services included in each home.

The chef-inspired kitchen boasts built-in stainless steel appliances, a gas cooktop, waterfall-edge island, and a walk-through pantry for added convenience. LVP flooring flows throughout the main level, which includes a mudroom with walk-in closet and a flex room behind elegant French doors. The great room offers a cozy gas fireplace with mantle, while the large front bonus room is filled with natural light. Unwind in the 5-piece ensuite featuring a soaker tub, walk-in shower, quartz countertops, undermount sinks, and thoughtful storage with banks of drawers in both bathrooms. This energy-efficient home is Built Green certified and includes triple-pane windows, a high-efficiency furnace, and a solar chase for a solar-ready setup. With blower door testing that can may be eligible for up to 25% mortgage insurance savings, plus an electric car charger rough-in, itâ€™s designed for sustainable, future-forward living.



Featuring a full range of smart home technology, this home includes a programmable thermostat, ring camera doorbell, smart front door lock, smart and motion-activated switches—all seamlessly controlled via an Amazon Alexa touchscreen hub.

Photos are representative.

Built in 2024

**Essential Information**

MLS® #	A2263566
Price	\$747,364
Bedrooms	3
Bathrooms	3.00
Full Baths	2
Half Baths	1
Square Footage	2,434
Acres	0.11
Year Built	2024
Type	Residential
Sub-Type	Detached
Style	2 Storey
Status	Active

**Community Information**

Address	50 Saddlebred Place
Subdivision	Heartland
City	Cochrane
County	Rocky View County
Province	Alberta
Postal Code	T4C3E7

**Amenities**

Parking Spaces	4
Parking	Double Garage Attached
# of Garages	2

## Interior

Interior Features	Double Vanity, Kitchen Island, Open Floorplan, Pantry, Smart Home, Soaking Tub, Tankless Hot Water, Walk-In Closet(s)
Appliances	Built-In Oven, Dishwasher, Gas Cooktop, Microwave, Range Hood, Refrigerator, Tankless Water Heater
Heating	Forced Air, Natural Gas
Cooling	None
Fireplace	Yes
# of Fireplaces	1
Fireplaces	Gas, Decorative
Has Basement	Yes
Basement	Full, Unfinished

## Exterior

Exterior Features	Lighting
Lot Description	Back Yard, Corner Lot
Roof	Asphalt Shingle
Construction	Stone, Vinyl Siding, Wood Frame
Foundation	Poured Concrete

## Additional Information

Date Listed	October 9th, 2025
Days on Market	1
Zoning	R-LD

## Listing Details

Listing Office	Bode Platform Inc.
----------------	--------------------

Data is supplied by Pillar 9â„¢ MLSÂ® System. Pillar 9â„¢ is the owner of the copyright in its MLSÂ® System. Data is deemed reliable but is not guaranteed accurate by Pillar 9â„¢. The trademarks MLSÂ®, Multiple Listing ServiceÂ® and the associated logos are owned by The Canadian Real Estate Association (CREA) and identify the quality of services provided by real estate professionals who are members of CREA. Used under license.