

\$495,000 - 18 Martinvalley Way Ne, Calgary

MLS® #A2262664

\$495,000

3 Bedroom, 2.00 Bathroom, 1,110 sqft

Residential on 0.08 Acres

Martindale, Calgary, Alberta

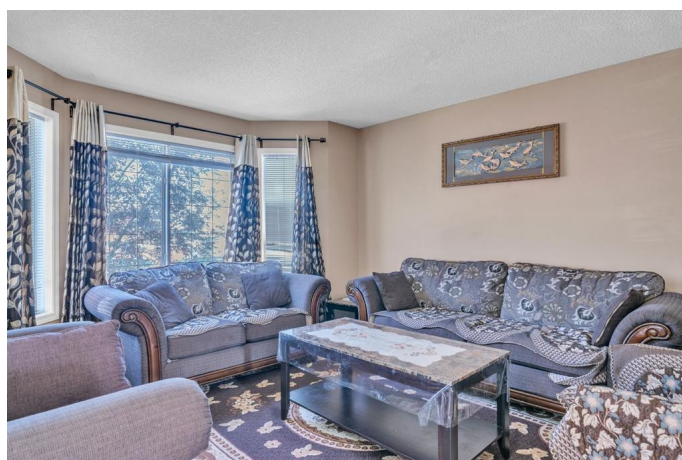
Welcome to this 2-storey detached home located in the heart of Martindale! This property offers excellent potential with 3 bedrooms, 2 full bathrooms, and an unfinished basement ready for your personal touch. The main floor features a bright living area and easy access to a large deck—perfect for family gatherings or summer BBQs. A double detached garage provides ample parking and storage space. Conveniently located close to schools, parks, shopping, public transit, and all major amenities.

Built in 2000

Essential Information

MLS® #	A2262664
Price	\$495,000
Bedrooms	3
Bathrooms	2.00
Full Baths	1
Half Baths	1
Square Footage	1,110
Acres	0.08
Year Built	2000
Type	Residential
Sub-Type	Detached
Style	2 Storey
Status	Active

Community Information



Address	18 Martinvalley Way Ne
Subdivision	Martindale
City	Calgary
County	Calgary
Province	Alberta
Postal Code	T3J 4A1

Amenities

Parking Spaces	2
Parking	Double Garage Detached
# of Garages	2

Interior

Interior Features	No Animal Home, No Smoking Home, See Remarks
Appliances	Dishwasher, Electric Range, Microwave, Refrigerator, Washer/Dryer
Heating	Forced Air
Cooling	None
Has Basement	Yes
Basement	Full, Unfinished

Exterior

Exterior Features	Playground
Lot Description	Back Lane, Back Yard
Roof	Asphalt Shingle
Construction	Vinyl Siding, Wood Frame
Foundation	Poured Concrete

Additional Information

Date Listed	October 6th, 2025
Days on Market	1
Zoning	R-CG

Listing Details

Listing Office	eXp Realty
----------------	------------

Data is supplied by Pillar 9â„¢ MLS® System. Pillar 9â„¢ is the owner of the copyright in its MLS® System. Data is deemed reliable but is not guaranteed accurate by Pillar 9â„¢. The trademarks MLS®, Multiple Listing Service® and the associated logos are owned by The Canadian Real Estate Association (CREA) and identify the quality of services provided by real estate professionals who are members of CREA. Used under license.