

\$18,500 - 18 Railway Avenue E, Marshall

MLS® #A2262534

\$18,500

0 Bedroom, 0.00 Bathroom,
Land on 0.10 Acres

NONE, Marshall, Saskatchewan

Your Chance to Build in Marshall!

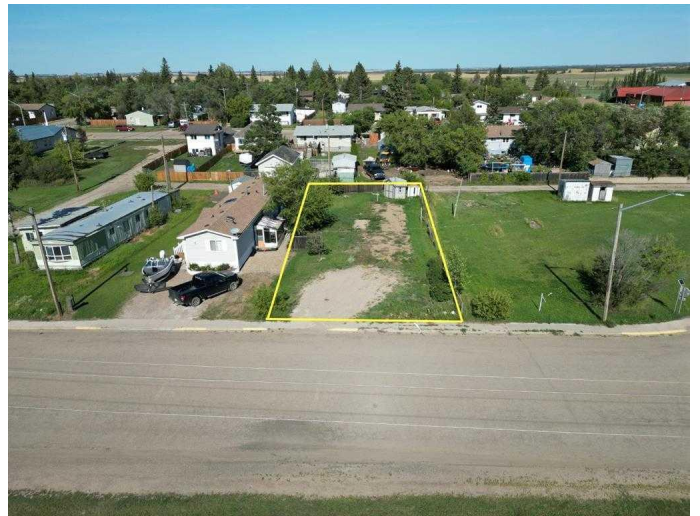
It's time to settle down with your own piece of land! Located in the friendly village of Marshall, this property is ready for your new mobile home. Conveniently situated just two blocks from the school and one block from Main Street, you'll enjoy small-town living with easy access to local amenities and only a 15-minute drive to Lloydminster. Town services include water, with a septic tank already on the property. An ideal opportunity to create your own affordable home base in a welcoming community!

Essential Information

MLS® #	A2262534
Price	\$18,500
Bathrooms	0.00
Acres	0.10
Type	Land
Sub-Type	Residential Land
Status	Active

Community Information

Address	18 Railway Avenue E
Subdivision	NONE
City	Marshall
County	Saskatchewan
Province	Saskatchewan
Postal Code	S0M1R0



Additional Information

Date Listed October 8th, 2025
Zoning R1

Listing Details

Listing Office LPT Realty

Data is supplied by Pillar 9â„¢ MLS® System. Pillar 9â„¢ is the owner of the copyright in its MLS® System. Data is deemed reliable but is not guaranteed accurate by Pillar 9â„¢. The trademarks MLS®, Multiple Listing Service® and the associated logos are owned by The Canadian Real Estate Association (CREA) and identify the quality of services provided by real estate professionals who are members of CREA. Used under license.