

\$1,450,000 - Se-26-66-20-w4, Rural Athabasca County

MLS® #A2262230

\$1,450,000

0 Bedroom, 0.00 Bathroom,
Land on 468.77 Acres

NONE, Rural Athabasca County, Alberta

468.77 Acres of quality grain land east of Athabasca just off Highway 55. SW-26-66-20-W4 & NE-26-66-20-W4 were wheat crop this year and NW-25-66-20-W4 was seeded for canola and approximately 15 +/- acres hay. Good access, all 3 quarters adjoin, this is a great opportunity to expand your farming operation. Offered for sale by sealed tender closing October 30th at 11:00 am.

Essential Information

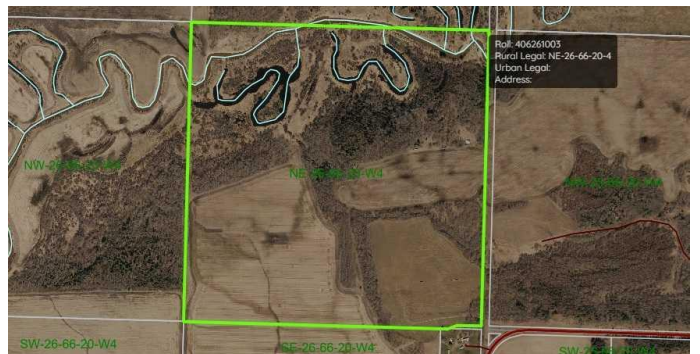
MLS® #	A2262230
Price	\$1,450,000
Bathrooms	0.00
Acres	468.77
Type	Land
Sub-Type	Residential Land
Status	Active

Community Information

Address	Se-26-66-20-w4
Subdivision	NONE
City	Rural Athabasca County
County	Athabasca County
Province	Alberta
Postal Code	T9S2A8

Additional Information

Date Listed	October 4th, 2025
-------------	-------------------



Days on Market	2
Zoning	Agricultural

Listing Details

Listing Office	ROYAL LEPAGE COUNTY REALTY
----------------	----------------------------

Data is supplied by Pillar 9â„¢ MLS® System. Pillar 9â„¢ is the owner of the copyright in its MLS® System. Data is deemed reliable but is not guaranteed accurate by Pillar 9â„¢. The trademarks MLS®, Multiple Listing Service® and the associated logos are owned by The Canadian Real Estate Association (CREA) and identify the quality of services provided by real estate professionals who are members of CREA. Used under license.