

\$190,000 - Twp Rd 704, Rural Grande Prairie No. 1, County of

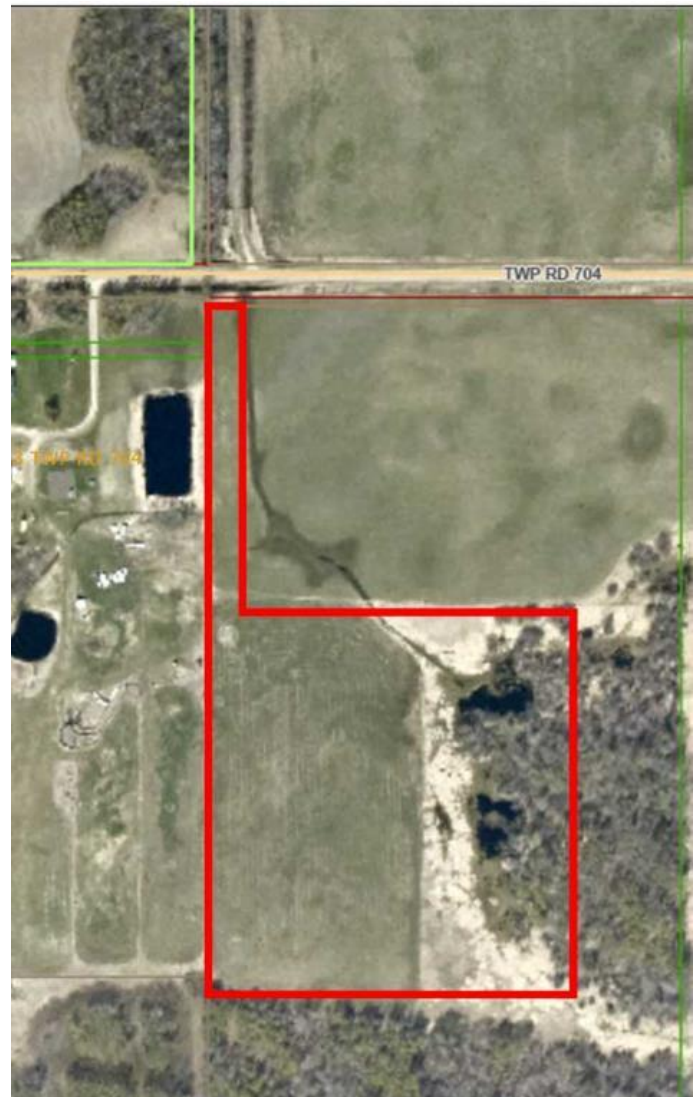
MLS® #A2262175

\$190,000

0 Bedroom, 0.00 Bathroom,
Land on 13.28 Acres

NONE, Rural Grande Prairie No. 1, County of,
Alberta

This beautiful 13.28-acre parcel offers endless possibilities with its CR5 zoning, making it ideal for building your dream home, hobby farm, or recreational getaway.Â The property is well situated with an approach already in place and natural gas and power located at the road.Â Featuring a flat, open area perfect for building, the land is enhanced by lush grasses and a mix of bush on the east and north sides, creating natural privacy and shelter.Â For outdoor enthusiasts, the location is unbeatable â€” just a 5-minute quad ride to the Beaverlodge River!Â Call today!Â Please do not go on the property without an appointment.



Essential Information

MLS® #	A2262175
Price	\$190,000
Bathrooms	0.00
Acres	13.28
Type	Land
Sub-Type	Residential Land
Status	Active

Community Information

Address	Twp Rd 704
Subdivision	NONE

City Rural Grande Prairie No. 1, C
County Grande Prairie No. 1, County
Province Alberta
Postal Code T0H 3S0

Additional Information

Date Listed October 3rd, 2025
Days on Market 1
Zoning CR-5

Listing Details

Listing Office Century 21 Grande Prairie Real Estate Ltd.



Data is supplied by Pillar 9â„¢ MLSÂ® System. Pillar 9â„¢ is the owner of the copyright in its MLSÂ® System. Data is deemed reliable but is not guaranteed accurate by Pillar 9â„¢. The trademarks MLSÂ®, Multiple Listing ServiceÂ® and the associated logos are owned by The Canadian Real Estate Association (CREA) and identify the quality of services provided by real estate professionals who are members of CREA. Used under license.

