

\$305,000 - 2202, 8 Bridlecrest Drive Sw, Calgary

MLS® #A2261728

\$305,000

2 Bedroom, 2.00 Bathroom, 994 sqft

Residential on 0.00 Acres

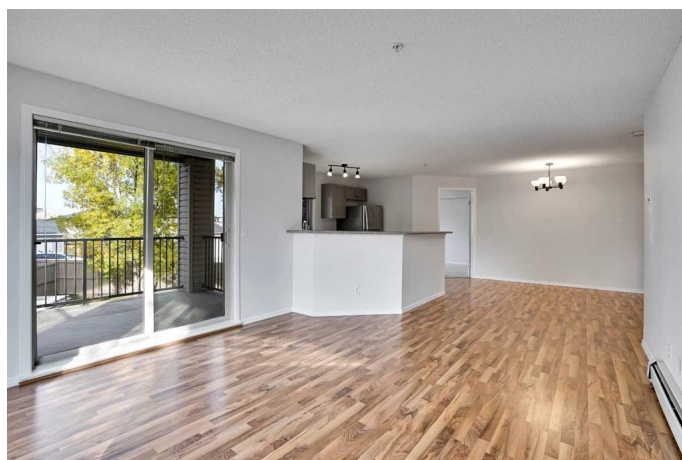
Bridlewood, Calgary, Alberta

Welcome to Bridlecrest Pointe! This bright and spacious corner unit offers nearly 1,000 sq. ft. of comfortable living with a smart, open layout. Featuring 2 bedrooms and 2 full bathrooms â€” including a private ensuite with a walk-through closet â€” this home is freshly painted and finished with brand-new carpet throughout. The kitchen is equipped with a brand-new stove and hood, plus other appliances that are only a year old, and it flows seamlessly into the dining and living areas, designed for both relaxation and entertaining. Large windows fill the space with natural light, extending to the west-facing balcony â€” perfect for enjoying evening sunsets. Added conveniences include in-suite laundry and a titled underground heated parking stall, with plenty of visitor parking available. Ideally located in the heart of Bridlewood, youâ€™re just steps from shopping, restaurants, schools, parks, and public transit. Move-in ready and waiting for you!

Built in 2008

Essential Information

MLS® #	A2261728
Price	\$305,000
Bedrooms	2
Bathrooms	2.00
Full Baths	2



Square Footage	994
Acres	0.00
Year Built	2008
Type	Residential
Sub-Type	Apartment
Style	Single Level Unit
Status	Active

Community Information

Address	2202, 8 Bridlecrest Drive Sw
Subdivision	Bridlewood
City	Calgary
County	Calgary
Province	Alberta
Postal Code	T2Y 0H7

Amenities

Amenities	Elevator(s), Trash, Visitor Parking
Parking Spaces	1
Parking	Underground, Titled

Interior

Interior Features	Breakfast Bar, Built-in Features, Closet Organizers, Laminate Counters, Open Floorplan, Storage, Vinyl Windows, Walk-In Closet(s), Track Lighting
Appliances	Dishwasher, Dryer, Electric Stove, Range Hood, Refrigerator, Washer
Heating	Baseboard, Natural Gas
Cooling	None
# of Stories	4

Exterior

Exterior Features	Balcony
Construction	Stone, Vinyl Siding, Wood Frame

Additional Information

Date Listed	October 6th, 2025
Zoning	M-2 d162

Listing Details

Listing Office	Gravity Realty Group
----------------	----------------------

Data is supplied by Pillar 9â„¢ MLS® System. Pillar 9â„¢ is the owner of the copyright in its MLS® System. Data is deemed reliable but is not guaranteed accurate by Pillar 9â„¢. The trademarks MLS®, Multiple Listing Service® and the associated logos are owned by The Canadian Real Estate Association (CREA) and identify the quality of services provided by real estate professionals who are members of CREA. Used under license.