

\$349,000 - 70009 Range Road 75, Grovedale

MLS® #A2261566

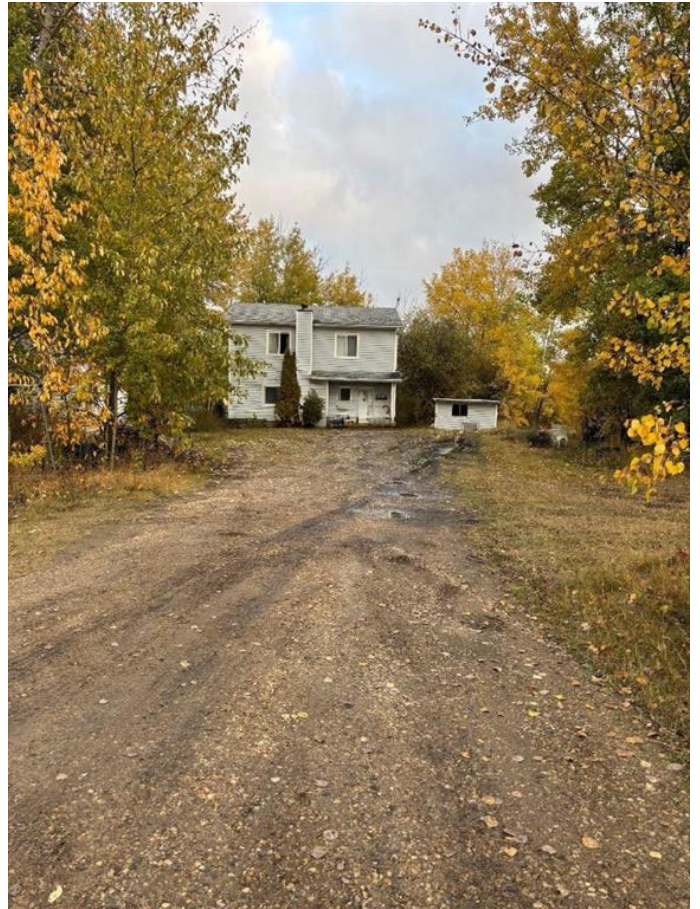
\$349,000

3 Bedroom, 1.00 Bathroom, 1,456 sqft

Residential on 9.99 Acres

NONE, Grovedale, Alberta

Discover this charming 9.99 acre property, well loved by long-time owners and offering a wonderful opportunity to create your dream home. Its solid bones and the incredible price point leave plenty of room for customization and personal touches and a fantastic opportunity to start your homestead. Previously home for horses, the lush, treed yard provides a peaceful countryside setting, complete with cozy fireplace area in the backyard - perfect for gatherings or quiet evenings. With ample parking and plenty of space for all your toys, this property is a fantastic canvas for your vision. Seize the chance to transform this special property into your forever home!!



Built in 1995

Essential Information

MLS® #	A2261566
Price	\$349,000
Bedrooms	3
Bathrooms	1.00
Full Baths	1
Square Footage	1,456
Acres	9.99
Year Built	1995
Type	Residential
Sub-Type	Detached
Style	2 Storey, Acreage with Residence

Status Active

Community Information

Address 70009 Range Road 75
Subdivision NONE
City Grovedale
County Greenview No. 16, M.D. of
Province Alberta
Postal Code T0H 1X0

Amenities

Parking Spaces 8
Parking Driveway, None

Interior

Interior Features Laminate Counters
Appliances Dishwasher, Dryer, Electric S
Heating Forced Air, Propane
Cooling None
Fireplace Yes
of Fireplaces 1
Fireplaces Living Room, Wood Burning
Basement None

Exterior

Exterior Features Private Yard, Storage, Rain E
Lot Description Few Trees, Rectangular Lot,
Roof Asphalt Shingle
Construction Vinyl Siding
Foundation Poured Concrete, Slab

Additional Information

Date Listed October 2nd, 2025
Days on Market 4
Zoning A1

Listing Details

Listing Office Realty Executives North West



the associated logos are owned by The Canadian Real Estate Association (CREA) and identify the quality of services provided by real estate professionals who are members of CREA. Used under license.