

\$450,000 - Se-19-72-10-w6 ., Beaverlodge

MLS® #A2261441

\$450,000

0 Bedroom, 0.00 Bathroom,
Land on 133.89 Acres

NONE, Beaverlodge, Alberta

This property is well located, only 1/2 mile off pavement, 5 miles Northwest of Beaverlodge. Approximately 125+/- acres are being farmed; the balance is a wellsite and access road and a narrow strip of bush. The surface lease revenue is yet to be confirmed and is estimated at \$4,300.00 per year. Good building site. The land tenant has the first right of refusal on any acceptable offers received in writing.



Essential Information

MLS® #	A2261441
Price	\$450,000
Bathrooms	0.00
Acres	133.89
Type	Land
Sub-Type	Recreational
Status	Active

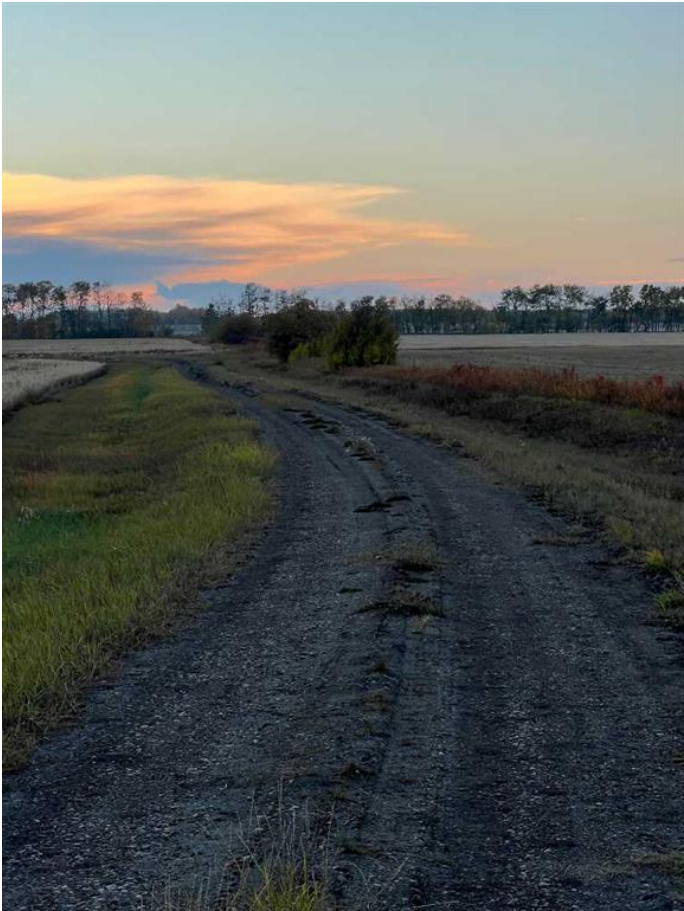
Community Information

Address	Se-19-72-10-w6 .
Subdivision	NONE
City	Beaverlodge
County	Grande Prairie No. 1, County of
Province	Alberta
Postal Code	T0H 0C0

Additional Information

Date Listed	October 8th, 2025
-------------	-------------------

Zoning	AG
Listing Details	
Listing Office	All Peace Realty Ltd.



Data is supplied by Pillar 9â„¢ MLS® System. Pillar 9â„¢ is the owner of the copyright in its MLS® System. Data is deemed reliable but is not guaranteed accurate by Pillar 9â„¢. The trademarks MLS®, Multiple Listing Service® and the associated logos are owned by The Canadian Real Estate Association (CREA) and identify the quality of services provided by real estate professionals who are members of CREA. Used under license.

