

\$748,650 - 231 Lewiston Drive Ne, Calgary

MLS® #A2261363

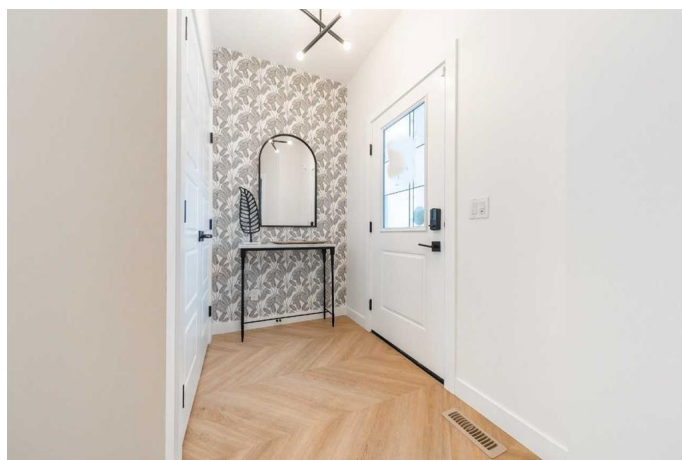
\$748,650

6 Bedroom, 4.00 Bathroom, 1,880 sqft

Residential on 0.06 Acres

Lewisburg, Calgary, Alberta

Discover luxury and versatility in the stunning Jade Showhome where style meets functionality! Built by a trusted builder with over 70 years of experience, this home showcases on-trend, designer-curated interior selections tailored for a home that feels personalized to you. Energy efficient and smart home features, plus moving concierge services included in each home. This beautifully designed home features an open-concept layout with stainless steel appliances, a spice kitchen with gas range and pantry shelving, and an electric fireplace with a striking mantle above. A main floor bedroom and full bathroom with a walk-in shower offer added flexibility. Upstairs, enjoy the convenience of laundry (washer & dryer included), and a spacious ensuite with a walk-in shower. The fully developed basement of this home features a ONE BEDROOM LEGAL SUITE including full bathroom, 9' ceilings and convenient side entrance perfect for extended family living.. Photos are representative. Additional windows throughout bring in extra light, and a rear deck offers outdoor space to unwind. This energy-efficient home is Built Green certified and includes triple-pane windows, a high-efficiency furnace, and a solar chase for a solar-ready setup. With blower door testing that can may be eligible for up to 25% mortgage insurance savings, plus an electric car charger rough-in, it's designed for sustainable, future-forward living. Featuring a full range of smart home



technology, this home includes a programmable thermostat, ring camera doorbell, smart front door lock, smart and motion-activated switchesâ€”all seamlessly controlled via an Amazon Alexa touchscreen hub. Photos are representative.

Built in 2023

Essential Information

MLS® #	A2261363
Price	\$748,650
Bedrooms	6
Bathrooms	4.00
Full Baths	4
Square Footage	1,880
Acres	0.06
Year Built	2023
Type	Residential
Sub-Type	Detached
Style	2 Storey
Status	Active

Community Information

Address	231 Lewiston Drive Ne
Subdivision	Lewisburg
City	Calgary
County	Calgary
Province	Alberta
Postal Code	T3P2H7

Amenities

Amenities	None
Parking Spaces	2
Parking	Double Garage Detached
# of Garages	2

Interior

Interior Features	Built-in Features, Double Vanity, Kitchen Island, Open Floorplan, Pantry,
-------------------	---

	Quartz Counters, Separate Entrance, Smart Home, Soaking Tub, Vaulted Ceiling(s), Walk-In Closet(s), Skylight(s)
Appliances	Dishwasher, Dryer, Microwave, Range Hood, Refrigerator, Washer, Induction Cooktop, Tankless Water Heater
Heating	Forced Air, Natural Gas
Cooling	Central Air
Fireplace	Yes
# of Fireplaces	1
Fireplaces	Electric, Decorative
Has Basement	Yes
Basement	Finished, Full, Suite

Exterior

Exterior Features	None
Lot Description	Back Lane, Landscaped, Level, Street Lighting
Roof	Asphalt Shingle
Construction	Vinyl Siding, Wood Frame
Foundation	Poured Concrete

Additional Information

Date Listed	October 6th, 2025
Days on Market	1
Zoning	R-Gm

Listing Details

Listing Office	Bode Platform Inc.
----------------	--------------------

Data is supplied by Pillar 9â„¢ MLS® System. Pillar 9â„¢ is the owner of the copyright in its MLS® System. Data is deemed reliable but is not guaranteed accurate by Pillar 9â„¢. The trademarks MLS®, Multiple Listing Service® and the associated logos are owned by The Canadian Real Estate Association (CREA) and identify the quality of services provided by real estate professionals who are members of CREA. Used under license.