

\$699,900 - 10504 148 Ave, Rural Grande Prairie No. 1, County of

MLS® #A2261113

\$699,900

3 Bedroom, 2.00 Bathroom, 1,874 sqft
Residential on 0.17 Acres

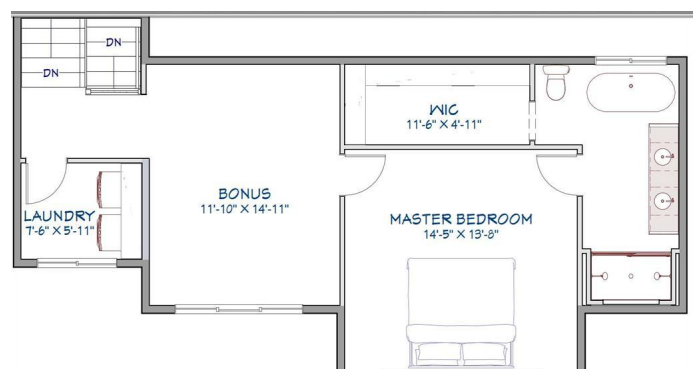
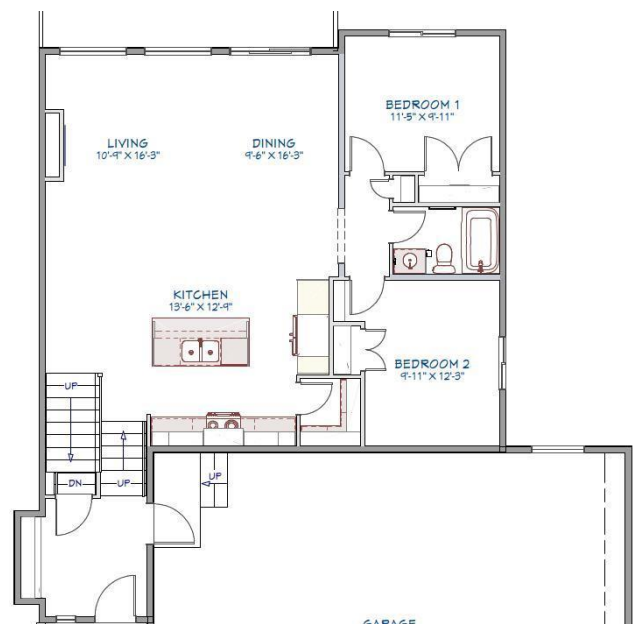
Whispering Ridge, Rural Grande Prairie No. 1,
County of, Alberta

The Drew plan by Little Rock Builders is a highly sought after overly efficient floor plan! At foundation stage. Home could be complete in 3-6 months. The large entry leads you into a large open area including a dining, kitchen and living area designed to host, live and enjoy life. The main level also has 2 good sized rooms and a full bathroom. The upper level includes a laundry room, bonus room and a master bedroom worthy of a magazine complimented by a gorgeous en-suite and walk-in closet. The basement is unfinished but has potential for 2 bedrooms, full bathroom and living area. The home features a large garage measuring 36' wide 25' deep. A large driveway and much more. This home is not built yet.

Built in 2025

Essential Information

MLS® #	A2261113
Price	\$699,900
Bedrooms	3
Bathrooms	2.00
Full Baths	2
Square Footage	1,874
Acres	0.17
Year Built	2025
Type	Residential



Sub-Type	Detached
Style	Modified Bi-Level
Status	Active

Community Information

Address	10504 148 Ave
Subdivision	Whispering Ridge
City	Rural Grande Prairie No. 1, County of
County	Grande Prairie No. 1, County of
Province	Alberta
Postal Code	T8X 0X2

Amenities

Parking Spaces	6
Parking	Quad or More Attached

Interior

Interior Features	See Remarks
Appliances	See Remarks
Heating	Forced Air, High Efficiency
Cooling	None
Fireplace	Yes
# of Fireplaces	1
Fireplaces	Gas
Has Basement	Yes
Basement	Full, Unfinished

Exterior

Exterior Features	Other
Lot Description	See Remarks
Roof	Asphalt Shingle
Construction	See Remarks
Foundation	Poured Concrete

Additional Information

Date Listed	September 30th, 2025
Days on Market	1
Zoning	RR2

Listing Details

Data is supplied by Pillar 9â„¢ MLS® System. Pillar 9â„¢ is the owner of the copyright in its MLS® System. Data is deemed reliable but is not guaranteed accurate by Pillar 9â„¢. The trademarks MLS®, Multiple Listing Service® and the associated logos are owned by The Canadian Real Estate Association (CREA) and identify the quality of services provided by real estate professionals who are members of CREA. Used under license.