

\$444,900 - 4942 Southlands Drive Se, Medicine Hat

MLS® #A2260866

\$444,900

4 Bedroom, 3.00 Bathroom, 1,059 sqft

Residential on 0.10 Acres

Southland, Medicine Hat, Alberta

Ideal Family Home in Southlands

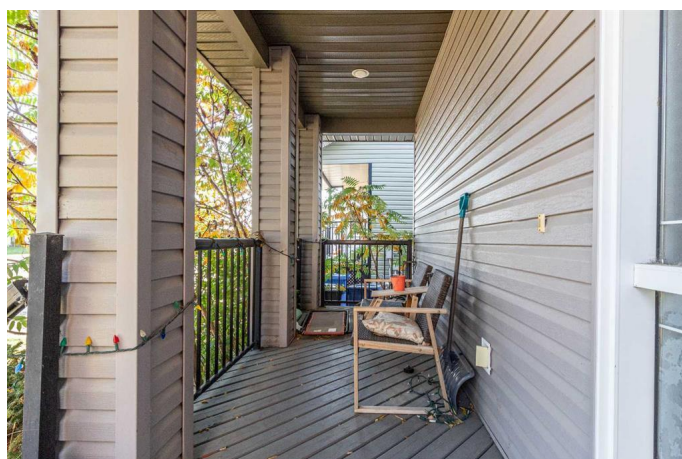
Located in a fantastic Southlands location, this home is designed with family living in mind.

Step into a spacious entryway that flows into an inviting open-concept main floor, filled with natural light. The kitchen offers an abundance of cabinets and counter space, while the large dining area and comfortable living room make it easy to entertain or enjoy family time.

Conveniently, a door off the kitchen leads directly to the backyard.

The main floor also includes two bedrooms and a full 4-piece bathroom. The primary suite is generous in size, easily accommodating a king bed, and features a walk-in closet and a well-finished 4-piece ensuite.

The fully developed basement extends your living space with two additional bedrooms, another full bathroom, and a spacious family room perfect for kids, guests, or movie nights. Outside, youâ€™ll find a fenced backyard and a 24x24 detached garage. Within walking distance to schools, shopping, and all amenities, this home combines comfort and convenienceâ€”making it the perfect fit for your growing family.



Built in 2007

Essential Information

MLS® # A2260866

Price \$444,900

Bedrooms	4
Bathrooms	3.00
Full Baths	3
Square Footage	1,059
Acres	0.10
Year Built	2007
Type	Residential
Sub-Type	Detached
Style	Bi-Level
Status	Active

Community Information

Address	4942 Southlands Drive Se
Subdivision	Southland
City	Medicine Hat
County	Medicine Hat
Province	Alberta
Postal Code	T1B 0H3

Amenities

Parking Spaces	2
Parking	Alley Access, Double Garage Detached, Garage Faces Rear, On Street
# of Garages	2

Interior

Interior Features	Ceiling Fan(s), Open Floorplan
Appliances	Other
Heating	Forced Air, Natural Gas
Cooling	Central Air
Has Basement	Yes
Basement	Finished, Full

Exterior

Exterior Features	Other
Lot Description	Back Yard
Roof	Asphalt Shingle
Construction	Vinyl Siding
Foundation	Poured Concrete

Additional Information

Date Listed	October 1st, 2025
Days on Market	2
Zoning	R-LD

Listing Details

Listing Office	RE/MAX MEDALTA REAL ESTATE
----------------	----------------------------

Data is supplied by Pillar 9â„¢ MLSÂ® System. Pillar 9â„¢ is the owner of the copyright in its MLSÂ® System. Data is deemed reliable but is not guaranteed accurate by Pillar 9â„¢. The trademarks MLSÂ®, Multiple Listing ServiceÂ® and the associated logos are owned by The Canadian Real Estate Association (CREA) and identify the quality of services provided by real estate professionals who are members of CREA. Used under license.