

\$334,900 - 90 Simpson Crescent Se, Medicine Hat

MLS® #A2260719

\$334,900

3 Bedroom, 2.00 Bathroom, 867 sqft

Residential on 0.10 Acres

SE Southridge, Medicine Hat, Alberta

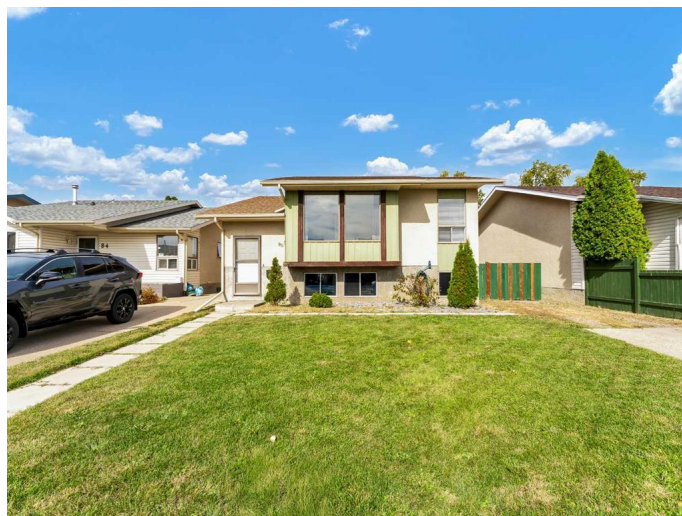
Great Value in SE Southridge! This fully finished bi-level home is bright, clean, and ready for new owners. The main floor has great natural light, 2 bedrooms, an updated 4-piece bathroom, a good-sized kitchen, dining area, and a cozy living room. Patio doors lead out to a private deck that overlooks the fully fenced and landscaped backyard – a great spot to relax or enjoy time outside.

Downstairs, youâ€™ll find a third bedroom, a 3-piece bathroom, a large family room, and a laundry area. Thereâ€™s also a single detached garage/workshop for parking, storage, or hobbies. Located in a quiet area with a green space and park right behind the backyard – a perfect spot for kids or pets to play. Walking distance to several schools. A great home at an affordable price!

Built in 1979

Essential Information

MLS® #	A2260719
Price	\$334,900
Bedrooms	3
Bathrooms	2.00
Full Baths	2
Square Footage	867
Acres	0.10
Year Built	1979
Type	Residential



Sub-Type	Detached
Style	Bi-Level
Status	Active

Community Information

Address	90 Simpson Crescent Se
Subdivision	SE Southridge
City	Medicine Hat
County	Medicine Hat
Province	Alberta
Postal Code	T1B 2R9

Amenities

Parking Spaces	4
Parking	Single Garage Detached
# of Garages	1

Interior

Interior Features	See Remarks
Appliances	Dishwasher, Electric Stove, Garage Control(s), Refrigerator, Washer/Dryer, Window Coverings
Heating	Forced Air, Natural Gas
Cooling	Central Air
Has Basement	Yes
Basement	Finished, Full

Exterior

Exterior Features	Other
Lot Description	Back Lane, Landscaped
Roof	Asphalt Shingle
Construction	Mixed
Foundation	Poured Concrete

Additional Information

Date Listed	October 1st, 2025
Days on Market	5
Zoning	R-LD

Listing Details

Listing Office	RE/MAX MEDALTA REAL ESTATE
----------------	----------------------------

Data is supplied by Pillar 9â„¢ MLS® System. Pillar 9â„¢ is the owner of the copyright in its MLS® System. Data is deemed reliable but is not guaranteed accurate by Pillar 9â„¢. The trademarks MLS®, Multiple Listing Service® and the associated logos are owned by The Canadian Real Estate Association (CREA) and identify the quality of services provided by real estate professionals who are members of CREA. Used under license.