

\$295,000 - 556 Rogers Avenue, Picture Butte

MLS® #A2260290

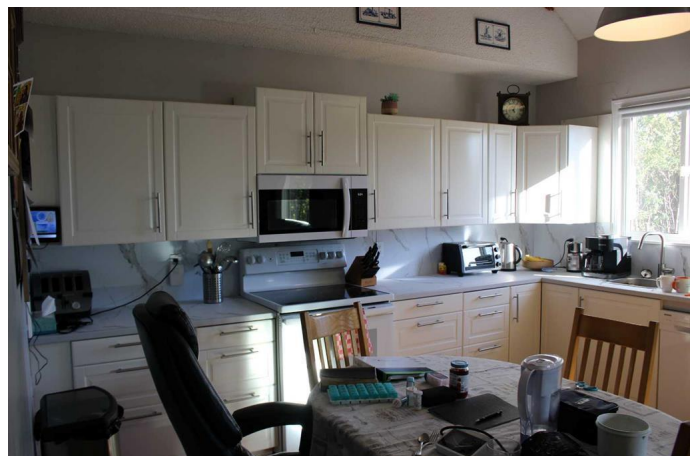
\$295,000

3 Bedroom, 1.00 Bathroom, 1,236 sqft

Residential on 0.17 Acres

NONE, Picture Butte, Alberta

Great home at an attractive price! Welcome to 556 Rogers Avenue in the thriving little town of Picture Butte. This one and a half story charmer will fit your needs perfectly. Featuring 2 main floor bedrooms, and one oversized master bedroom in the loft. The owner just installed a brand spanking new kitchen last week, along with a shiny new 3 piece bathroom with oversized corner shower, and stackable main floor laundry! The kitchen / living area has an abundance of natural light with the 16' high vaulted ceilings. There is even a flex room / den at the back, also with the 16' ceiling height. The basement still has laundry hookups, has a newer furnace and H/W tank, and is mainly just used for storage. This property has a 160' deep lot affording an abundance of privacy, so outdoor living space is not an issue. There is also a newer 18' x 22' detached rear garage on concrete with power for all of your projects! Hardy board siding, and newer shingles just add to the value! Lots of off street parking and only 1/2 block from the High School, this home should definitely be on your viewing list!



Built in 1960

Essential Information

MLS® # A2260290

Price \$295,000

Bedrooms 3

Bathrooms	1.00
Full Baths	1
Square Footage	1,236
Acres	0.17
Year Built	1960
Type	Residential
Sub-Type	Detached
Style	1 and Half Storey
Status	Active

Community Information

Address	556 Rogers Avenue
Subdivision	NONE
City	Picture Butte
County	Lethbridge County
Province	Alberta
Postal Code	T0K 1V0

Amenities

Parking Spaces	3
Parking	Single Garage Detached, Gravel Driveway
# of Garages	1

Interior

Interior Features	Vaulted Ceiling(s)
Appliances	Dishwasher, Garage Control(s), Microwave Hood Fan, Refrigerator, Stove(s), Washer/Dryer, Window Coverings
Heating	Forced Air
Cooling	Central Air
Has Basement	Yes
Basement	Full, Partially Finished

Exterior

Exterior Features	Other, Private Yard
Lot Description	Back Lane, Back Yard, Private
Roof	Asphalt Shingle
Construction	Cement Fiber Board
Foundation	Poured Concrete

Additional Information

Date Listed	September 29th, 2025
Days on Market	2
Zoning	R1

Listing Details

Listing Office	RE/MAX REAL ESTATE - LETHBRIDGE (PICTURE BUTTE)
----------------	---

Data is supplied by Pillar 9â„¢ MLSÂ® System. Pillar 9â„¢ is the owner of the copyright in its MLSÂ® System. Data is deemed reliable but is not guaranteed accurate by Pillar 9â„¢. The trademarks MLSÂ®, Multiple Listing ServiceÂ® and the associated logos are owned by The Canadian Real Estate Association (CREA) and identify the quality of services provided by real estate professionals who are members of CREA. Used under license.