

# \$135,000 - 14 Emanuel Drive, Rural Wainwright No. 61, M.D. of

---

MLS® #A2260134

**\$135,000**

0 Bedroom, 0.00 Bathroom,  
Land on 2.08 Acres

NONE, Rural Wainwright No. 61, M.D. of,  
Alberta

Acreage living with convenience of living next to town. You're minutes to schools, recreation, shopping, and the hospital. All services have been brought to the lot including fibre optics, gas, and power. Sale price is subject to GST.

## Essential Information

MLS® #	A2260134
Price	\$135,000
Bathrooms	0.00
Acres	2.08
Type	Land
Sub-Type	Residential Land
Status	Active

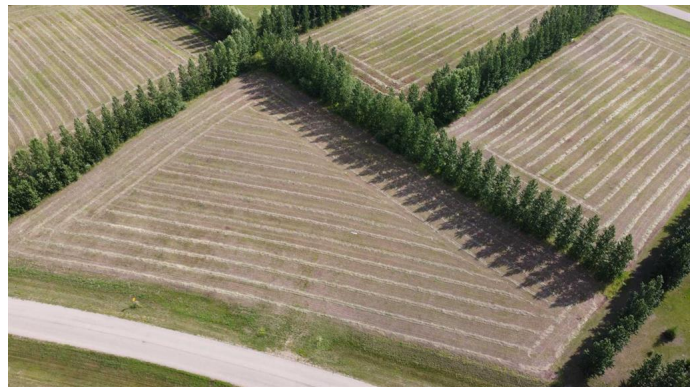
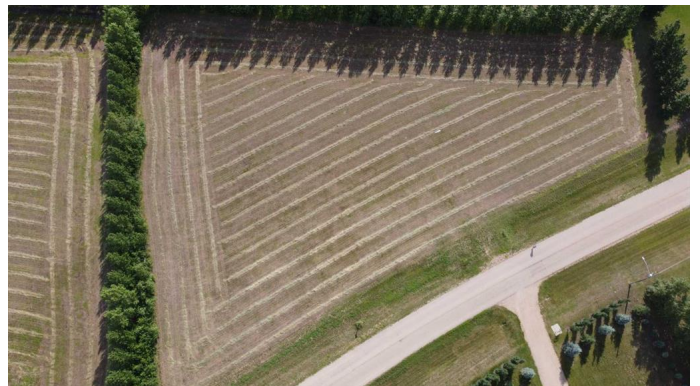
## Community Information

Address	14 Emanuel Drive
Subdivision	NONE
City	Rural Wainwright No. 61, M.D. of
County	Wainwright No. 61, M.D. of
Province	Alberta
Postal Code	T9W 1S9

## Amenities

Utilities	Electricity at Lot Line, Fiber Optics at Lot Line, Natural Gas at Lot Line
-----------	--

## Additional Information



Date Listed	September 25th, 2025
Days on Market	1
Zoning	CR

### **Listing Details**

Listing Office	ROYAL LEPAGE WRIGHT CHOICE REALTY
----------------	-----------------------------------

Data is supplied by Pillar 9â„¢ MLSÂ® System. Pillar 9â„¢ is the owner of the copyright in its MLSÂ® System. Data is deemed reliable but is not guaranteed accurate by Pillar 9â„¢. The trademarks MLSÂ®, Multiple Listing ServiceÂ® and the associated logos are owned by The Canadian Real Estate Association (CREA) and identify the quality of services provided by real estate professionals who are members of CREA. Used under license.