

\$499,000 - 210 Vantage Drive, Cochrane

MLS® #A2260116

\$499,000

3 Bedroom, 3.00 Bathroom, 1,500 sqft

Residential on 0.05 Acres

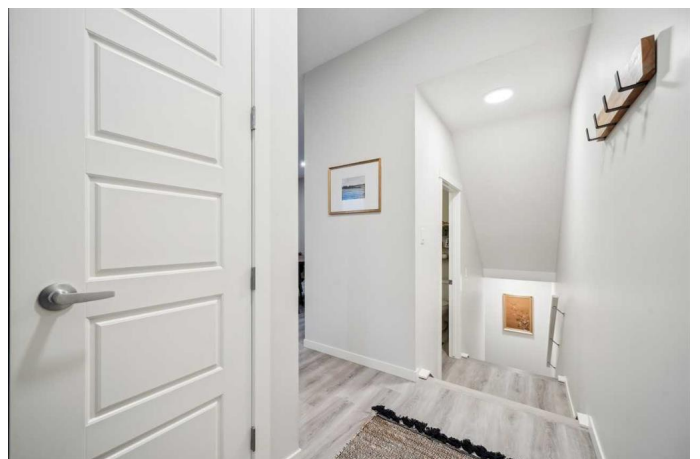
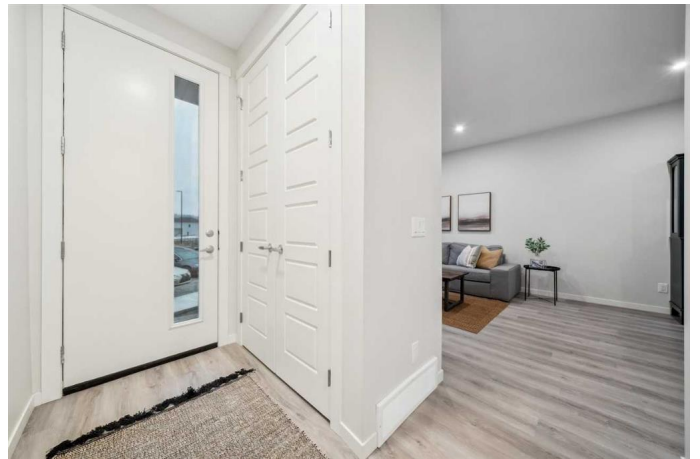
Greystone, Cochrane, Alberta

Modern 3-Bed, 2.5-Bath Townhome with fenced backyard in Greystone, Cochrane. Welcome to this 3-bedroom, 2.5-bathroom townhome. The open-concept main floor features a spacious kitchen with stainless steel appliances, quartz countertops, and a large island that flows into the dining and living areas. Upstairs, the primary bedroom offers a walk-in closet and an ensuite with double sinks. Two additional bedrooms, a full bathroom, and upper-floor laundry.. Additional highlights include a fenced backyard, optional basement development, and a Fresh Air System (HRV). Located close to pathways, shopping, and nature, in the heart of Cochrane. No Condo Fees! Anticipated possession available end of 2025.

Built in 2025

Essential Information

| | |
|----------------|-------------|
| MLS® # | A2260116 |
| Price | \$499,000 |
| Bedrooms | 3 |
| Bathrooms | 3.00 |
| Full Baths | 2 |
| Half Baths | 1 |
| Square Footage | 1,500 |
| Acres | 0.05 |
| Year Built | 2025 |
| Type | Residential |



| | |
|----------|---------------|
| Sub-Type | Row/Townhouse |
| Style | 2 Storey |
| Status | Active |

Community Information

| | |
|-------------|-------------------|
| Address | 210 Vantage Drive |
| Subdivision | Greystone |
| City | Cochrane |
| County | Rocky View County |
| Province | Alberta |
| Postal Code | T4C3G5 |

Amenities

| | |
|----------------|-------------|
| Parking Spaces | 2 |
| Parking | Parking Pad |

Interior

| | |
|-------------------|---|
| Interior Features | Double Vanity, High Ceilings, Kitchen Island, Low Flow Plumbing Fixtures, Open Floorplan, Recessed Lighting, Separate Entrance, Stone Counters, Walk-In Closet(s) |
| Appliances | Dishwasher, Dryer, Electric Range, Microwave Hood Fan, Refrigerator, Washer |
| Heating | Forced Air, Natural Gas |
| Cooling | None |
| Has Basement | Yes |
| Basement | Full, Unfinished |

Exterior

| | |
|-------------------|--|
| Exterior Features | Lighting, Private Entrance |
| Lot Description | Back Lane, Back Yard, Low Maintenance Landscape, Street Lighting |
| Roof | Asphalt Shingle |
| Construction | Wood Frame, Wood Siding |
| Foundation | Poured Concrete |

Additional Information

| | |
|----------------|----------------------|
| Date Listed | September 25th, 2025 |
| Days on Market | 2 |
| Zoning | R-MD |

Listing Details

Data is supplied by Pillar 9â„¢ MLSÂ® System. Pillar 9â„¢ is the owner of the copyright in its MLSÂ® System. Data is deemed reliable but is not guaranteed accurate by Pillar 9â„¢. The trademarks MLSÂ®, Multiple Listing ServiceÂ® and the associated logos are owned by The Canadian Real Estate Association (CREA) and identify the quality of services provided by real estate professionals who are members of CREA. Used under license.