

# \$214,900 - 319 Muirfield Crescent, Lyalta

MLS® #A2260040

**\$214,900**

0 Bedroom, 0.00 Bathroom,  
Land on 0.15 Acres

Lakes of Muirfield, Lyalta, Alberta

Check out this beautiful, WALK OUT lot backing on to the canal in Lakes of Muirfield and sale includes architecturally approved building plans. Stunning views of the sunrise as you look down the canal. With 56' across the front you can build a large home with a triple garage! This lot is fully serviced and situated in a gated golf course community close to Calgary, Strathmore, Chestermere and Airdrie. Ready for your dream home

## Essential Information

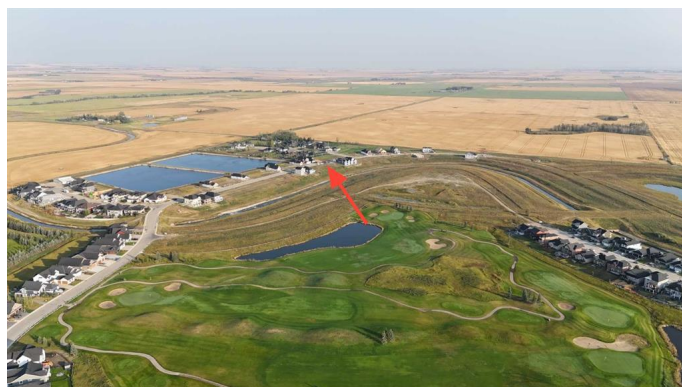
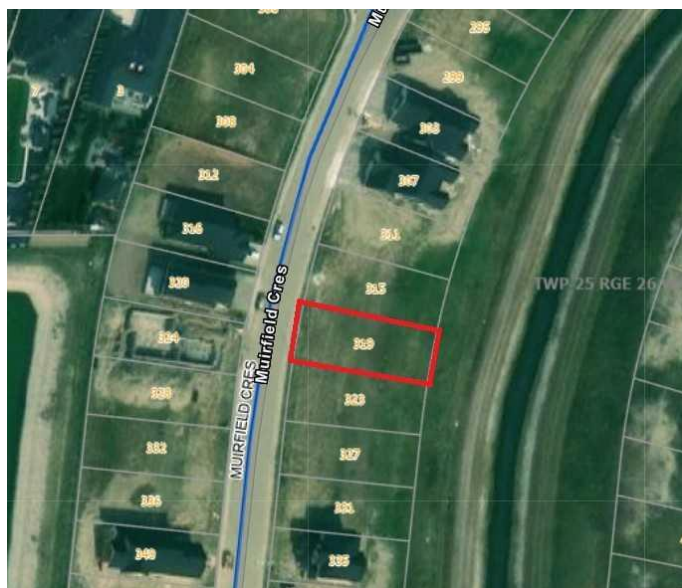
MLS® #	A2260040
Price	\$214,900
Bathrooms	0.00
Acres	0.15
Type	Land
Sub-Type	Residential Land
Status	Active

## Community Information

Address	319 Muirfield Crescent
Subdivision	Lakes of Muirfield
City	Lyalta
County	Wheatland County
Province	Alberta
Postal Code	T0J 1Y1

## Amenities

Amenities	None
-----------	------



Is Waterfront	Yes
Waterfront	Canal Access

**Exterior**

Lot Description	Back Yard, Backs on to Park/Green Space, Waterfront, Close to Clubhouse, Near Golf Course
-----------------	---

**Additional Information**

Date Listed	October 1st, 2025
Zoning	R-1
HOA Fees	85
HOA Fees Freq.	MON

**Listing Details**

Listing Office	Royal LePage Benchmark
----------------	------------------------

Data is supplied by Pillar 9â„¢ MLS® System. Pillar 9â„¢ is the owner of the copyright in its MLS® System. Data is deemed reliable but is not guaranteed accurate by Pillar 9â„¢. The trademarks MLS®, Multiple Listing Service® and the associated logos are owned by The Canadian Real Estate Association (CREA) and identify the quality of services provided by real estate professionals who are members of CREA. Used under license.