

# \$2,500 - 13001 106a Street, Grande Prairie

MLS® #A2259652

## \$2,500

3 Bedroom, 2.00 Bathroom, 1,203 sqft

Rental on 0.00 Acres

Northridge., Grande Prairie, Alberta

Executive 3 bedroom, 2 bathroom upper unit located in Northridge.

Open concept floor plan, kitchen features upgraded stainless steel appliances, a pantry for additional storage and white cabinetry. Gas fireplace in the living room. Primary bedroom features a walk-in closet and a full ensuite. Large back deck. Vinyl plank throughout - no carpet! Private in-suite laundry in the basement.

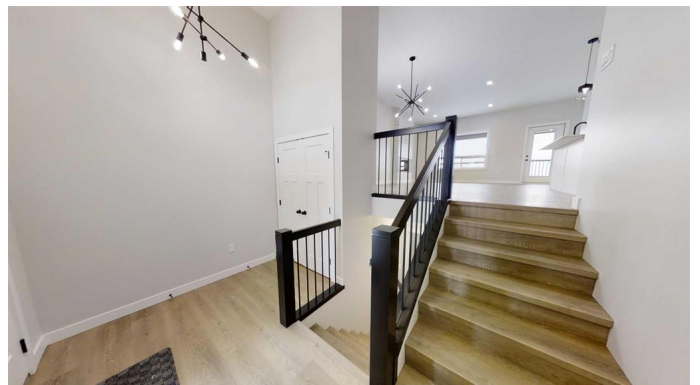
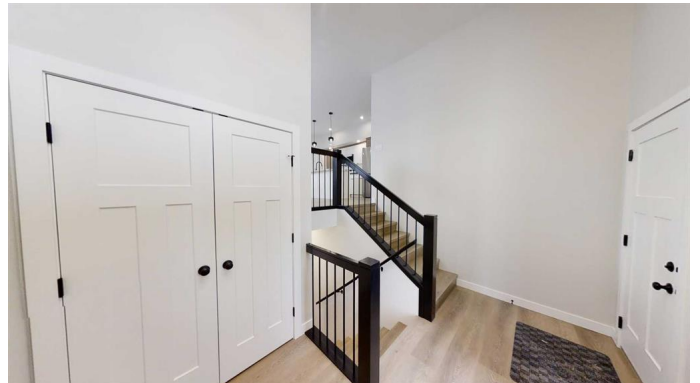
Single car attached garage insulated, not heated.

Fenced and separated back yard. On a corner lot!

Utilities will be included for an additional \$350/month.

\*Pet Friendly with \$50/mo pet fee\*

Application required prior to viewing.



## Essential Information

MLS® #	A2259652
Price	\$2,500
Bedrooms	3
Bathrooms	2.00
Full Baths	2
Square Footage	1,203
Acres	0.00
Type	Rental
Status	Active

## Community Information

Address	13001 106a Street
Subdivision	Northridge.
City	Grande Prairie
County	Grande Prairie
Province	Alberta
Postal Code	T8V6V2

### **Amenities**

Parking	Single Garage Attached
---------	------------------------

### **Interior**

Appliances	Dishwasher, Microwave Hood Fan, Oven, Refrigerator, Stove(s), Washer/Dryer
------------	--

### **Exterior**

Roof	Asphalt Shingle
------	-----------------

### **Additional Information**

Date Listed	September 24th, 2025
-------------	----------------------

Days on Market	2
----------------	---

### **Listing Details**

Listing Office	Grassroots Realty Group Ltd.
----------------	------------------------------

Data is supplied by Pillar 9â„¢ MLSÂ® System. Pillar 9â„¢ is the owner of the copyright in its MLSÂ® System. Data is deemed reliable but is not guaranteed accurate by Pillar 9â„¢. The trademarks MLSÂ®, Multiple Listing ServiceÂ® and the associated logos are owned by The Canadian Real Estate Association (CREA) and identify the quality of services provided by real estate professionals who are members of CREA. Used under license.