

# \$1,699,000 - 8, 136 Stonecreek Road, Canmore

MLS® #A2259580

**\$1,699,000**

4 Bedroom, 3.00 Bathroom, 2,060 sqft

Residential on 0.10 Acres

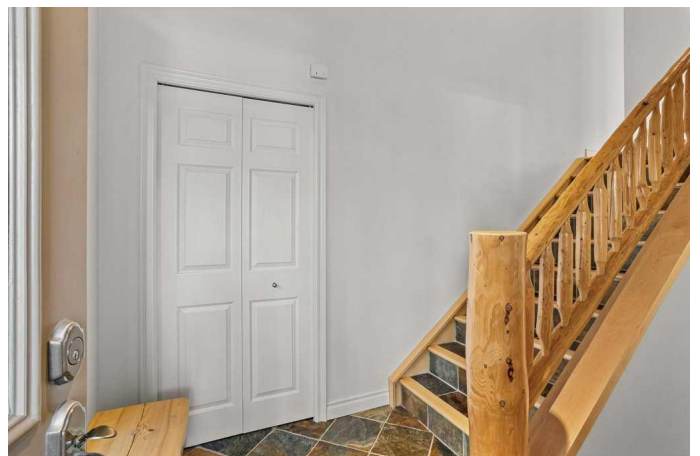
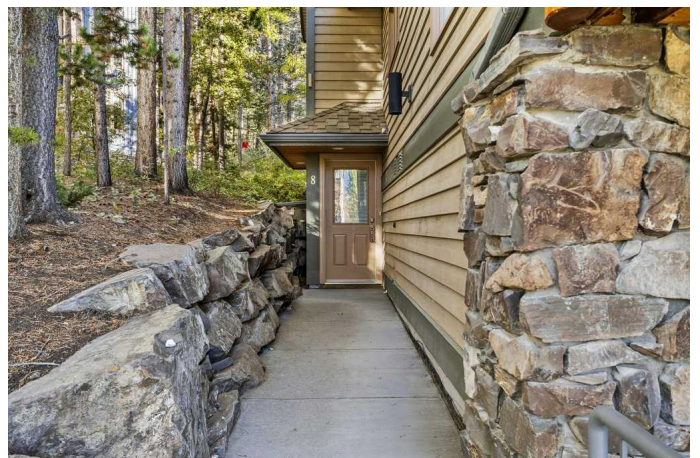
Silvertip, Canmore, Alberta

Experience mountain luxury in one of Canmore's most prestigious neighborhoods - Silvertip Resort. This 4-bedroom, 3-bathroom 2546 square foot duplex perfectly blends privacy, space, and breathtaking views, making it an exceptional choice as a full-time residence, second home, or a private retreat for friends and family.

The home comes fully furnished with custom-made log furniture, enhancing its mountain charm. Should you prefer, the furnishings can be removed upon request, giving you the flexibility to create a space entirely your own.

Tucked away backing onto the Silvertip Golf Course and surrounded by mature trees, this property offers a rare sense of seclusion. Inside, unobstructed south-facing views frame Canmore's most iconic peaks, while the cathedral ceilings in the main living area create a dramatic, light-filled atmosphere - the perfect setting for gathering with loved ones in front of the cozy fireplace.

Every detail has been carefully considered, from the in-floor heating on all levels for year-round comfort, to the spacious gear room designed to keep all your mountain toys organized. The oversized double garage with an 8-ft. door provides ample space for SUVs and adventure equipment.



With four well-appointed bedrooms, there's plenty of room to host family and guests in comfort and style. Whether you're savoring quiet mornings on the deck, enjoying après-ski evenings by the fire, or playing a round of golf just steps from your door, this home offers a lifestyle that is uniquely Canmore – a perfect balance of luxury, recreation, and natural beauty

Built in 1999

**Essential Information**

MLS® #	A2259580
Price	\$1,699,000
Bedrooms	4
Bathrooms	3.00
Full Baths	2
Half Baths	1
Square Footage	2,060
Acres	0.10
Year Built	1999
Type	Residential
Sub-Type	Semi Detached
Style	3 Storey, Side by Side
Status	Active

**Community Information**

Address	8, 136 Stonecreek Road
Subdivision	Silvertip
City	Canmore
County	Bighorn No. 8, M.D. of
Province	Alberta
Postal Code	T1W3A5

**Amenities**

Amenities	None
Parking Spaces	4

Parking	Double Garage Attached
# of Garages	2

### Interior

Interior Features	Breakfast Bar, High Ceilings, Kitchen Island, Laminate Counters, Natural Woodwork, Open Floorplan, Pantry, Storage, Vaulted Ceiling(s)
Appliances	Dishwasher, Dryer, Gas Cooktop, Range Hood, Refrigerator, Washer, Electric Oven
Heating	Boiler, In Floor, Natural Gas
Cooling	None
Fireplace	Yes
# of Fireplaces	1
Fireplaces	Gas, Living Room
Has Basement	Yes
Basement	Finished, Full

### Exterior

Exterior Features	Balcony
Lot Description	Close to Clubhouse, Cul-De-Sac, Gentle Sloping, Low Maintenance Landscape, No Neighbours Behind, Street Lighting, Views, On Golf Course, Irregular Lot
Roof	Asphalt
Construction	Wood Frame
Foundation	Poured Concrete

### Additional Information

Date Listed	September 23rd, 2025
Days on Market	3
Zoning	Z3

### Listing Details

Listing Office	RE/MAX Alpine Realty
----------------	----------------------

Data is supplied by Pillar 9â„¢ MLS® System. Pillar 9â„¢ is the owner of the copyright in its MLS® System. Data is deemed reliable but is not guaranteed accurate by Pillar 9â„¢. The trademarks MLS®, Multiple Listing Service® and the associated logos are owned by The Canadian Real Estate Association (CREA) and identify the quality of services provided by real estate professionals who are members of CREA. Used under license.