

\$2,000 - 2525 15 Avenue N, Lethbridge

MLS® #A2259187

\$2,000

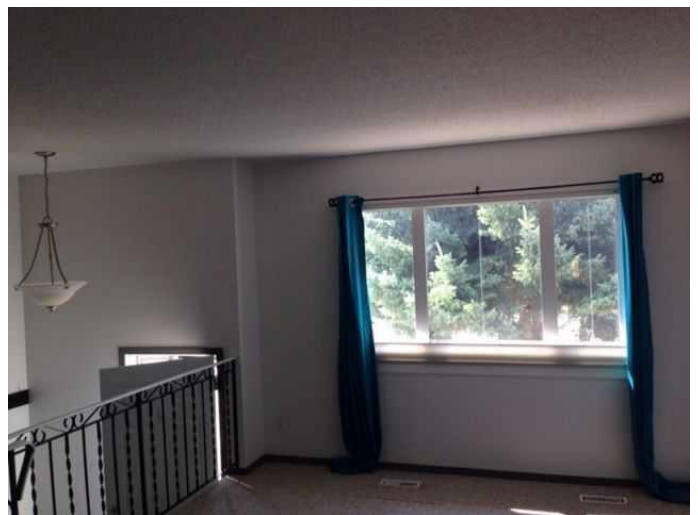
0 Bedroom, 0.00 Bathroom, 816 sqft

Rental on 0.00 Acres

Park Meadows, Lethbridge, Alberta

A well-kept bi-level home in the desirable subdivision of Park Meadows. Built in 1973 and offering 816 square feet of living space, this property is filled with character and comfort. The main floor is bright and inviting, featuring two bedrooms and a full bathroom, while the lower level adds a third bedroom and another bathroom, making it a great fit for families or roommates.

The home backs directly onto a large city park, providing a wonderful sense of space and privacy. A cozy backyard with a private patio makes it easy to enjoy summer evenings outdoors, and central air conditioning ensures year-round comfort inside. Parking is made simple with a convenient parking pad, and the location puts you close to schools, shopping, and all the amenities Park Meadows has to offer. ****Available Nov. 1st, 2025**** Rent: \$2000.00 + Utilities. ***Pets Not Allowed**** Application required prior to viewing. Security Deposit: \$2000.00.



Essential Information

MLS® #	A2259187
Price	\$2,000
Bathrooms	0.00
Square Footage	816
Acres	0.00
Type	Rental
Status	Active

Community Information

Address	2525 15 Avenue N
Subdivision	Park Meadows
City	Lethbridge
County	Lethbridge
Province	Alberta
Postal Code	T1H 4E1

Amenities

Parking	Off Street
---------	------------

Interior

Appliances	Central Air Conditioner, Oven, Refrigerator, Stove(s), Window Coverings
------------	---

Exterior

Roof	Asphalt Shingle
------	-----------------

Additional Information

Date Listed	October 1st, 2025
-------------	-------------------

Listing Details

Listing Office	Grassroots Realty Group
----------------	-------------------------

Data is supplied by Pillar 9â„¢ MLS® System. Pillar 9â„¢ is the owner of the copyright in its MLS® System. Data is deemed reliable but is not guaranteed accurate by Pillar 9â„¢. The trademarks MLS®, Multiple Listing Service® and the associated logos are owned by The Canadian Real Estate Association (CREA) and identify the quality of services provided by real estate professionals who are members of CREA. Used under license.