

\$669,900 - 9, 12301 Range Road 51a, Rural Cypress County

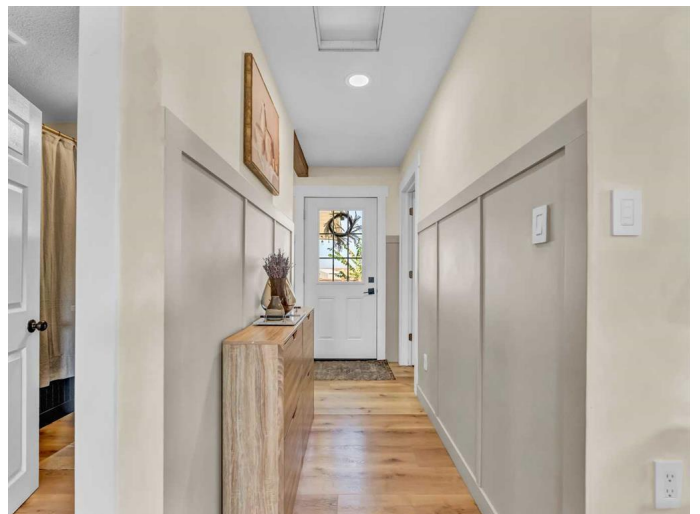
MLS® #A2258509

\$669,900

5 Bedroom, 3.00 Bathroom, 1,470 sqft
Residential on 2.19 Acres

NONE, Rural Cypress County, Alberta

If you've been looking for that perfect mix of peaceful country living with the convenience of being just minutes from Medicine Hat this is it. This 2.19-acre turnkey property is beautifully updated and ready for its next family. Inside, this home shines with updates throughout. The kitchen renovation features custom Hiebert cabinetry, quartz countertops with an island offering seating, an attractive backsplash and updated appliances, lighting, and fixtures creating a modern, timeless space. On the main floor you'll appreciate an Open concept footprint with a flex space perfect for peaceful morning coffee, the kitchen, dining and cozy living room, find 2 bedrooms, 2 full bathrooms and access to both the front and back decks. The primary suite offers beautiful custom built in closets, a gas fireplace, and a luxurious en-suite with a dual-head custom tile shower, quartz counters, and double sinks. The walkout basement is fully developed with in-floor heating, 3 additional bedrooms, a flex area off the access to outside, a 4-piece bath, laundry room (with cabinets + washer/dryer included), and a full theater room complete with projector, screen, and receiver. Step outside from the dining area onto the deck, perfect for BBQs and entertaining while overlooking the yard with access to your heated above ground pool. The irrigated yard has plenty of space for kids, pets, or future development. Bonus inclusions:



3 storage sheds, a greenhouse, chicken coop, kidsâ€™™ play center, trampoline, a John Deere lawn tractor, and a quad with snow blade â€™ everything you need to just move in and enjoy. The acreage is fully fenced with post-and-wire plus chain link cross-fencing (2019), and a newer concrete driveway (2019) leads you right up to the heated single attached garage. Inside the garage youâ€™™ll find a functional workspace and an in-ground 1000-gallon cistern, fed by the well with a brand-new pump (2021). The upgraded water filtration system includes a softener (2015), 120-gallon chlorine filtration (2019), and carbon/sediment filters (2019) â€™ all set up for peace of mind. This private, well-cared-for property truly has it all â€™ updates, space, and comfort in a country setting close to town. Donâ€™™t wait â€™ book your private showing today!

Built in 1978

Essential Information

MLS® #	A2258509
Price	\$669,900
Bedrooms	5
Bathrooms	3.00
Full Baths	3
Square Footage	1,470
Acres	2.19
Year Built	1978
Type	Residential
Sub-Type	Detached
Style	Bungalow, Acreage with Residence
Status	Active

Community Information

Address	9, 12301 Range Road 51a
Subdivision	NONE
City	Rural Cypress County

County	Cypress County
Province	Alberta
Postal Code	T1B 0L4

Amenities

Parking	Concrete Driveway, Garage Door Opener, Heated Garage, Single Garage Attached
# of Garages	1

Interior

Interior Features	Kitchen Island, Open Floorplan, Quartz Counters
Appliances	Bar Fridge, Central Air Conditioner, Dishwasher, Garage Control(s), Microwave, Refrigerator, Stove(s), Washer/Dryer, Window Coverings, Freezer, Water Softener
Heating	Forced Air
Cooling	Central Air
Fireplace	Yes
# of Fireplaces	1
Fireplaces	Gas
Has Basement	Yes
Basement	Full

Exterior

Exterior Features	Storage
Lot Description	Landscaped, Underground Sprinklers
Roof	Metal
Construction	Mixed
Foundation	Poured Concrete

Additional Information

Date Listed	September 19th, 2025
Days on Market	47
Zoning	CR-1, Country Residential

Listing Details

Listing Office	ROYAL LEPAGE COMMUNITY REALTY
----------------	-------------------------------

Data is supplied by Pillar 9â„¢ MLSÂ® System. Pillar 9â„¢ is the owner of the copyright in its MLSÂ® System. Data is deemed reliable but is not guaranteed accurate by Pillar 9â„¢. The trademarks MLSÂ®, Multiple Listing ServiceÂ® and the associated logos are owned by The Canadian Real Estate Association (CREA) and identify the quality of services provided by real estate professionals who are members of CREA. Used under license.