

\$2,800 - 8810 126 Avenue, Grande Prairie

MLS® #A2258341

\$2,800

4 Bedroom, 3.00 Bathroom, 1,666 sqft

Rental on 0.00 Acres

Crystal Lake Estates, Grande Prairie, Alberta

4 bed 3 bath in Crystal Lake!

Enter into large sitting room with gas fireplace. Separate dining area with access to large rear deck and fully fenced yard.

Kitchen features island, lots of cabinets and counter top space, pantry, and gas stove!

3 beds and 2 full baths on upper level, including large primary with walk in closet and full ensuite.

Lower level has sitting room, with access to second huge deck. Full bathroom and entry to garage on this level.

Bottom level is set up as a bedroom, and has laundry/mechanical room.

Attached double garage. Fully fenced back yard.

Central A/C.

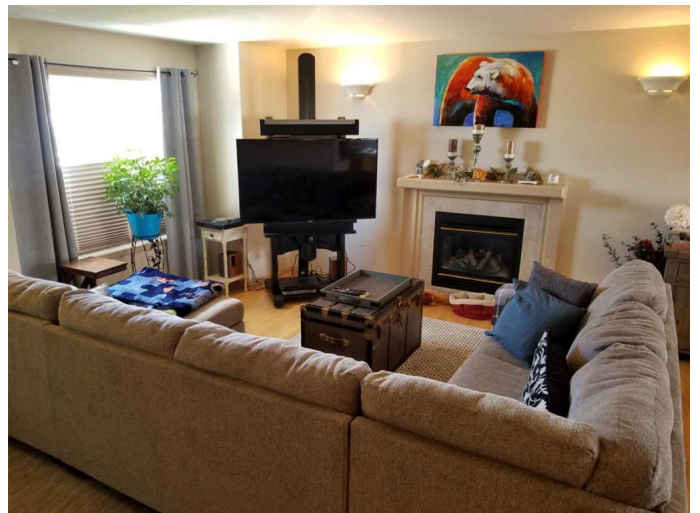
Pet friendly with a \$50 pet fee per month

Application required prior to viewing.

Utilities not included.

Essential Information

MLS® #	A2258341
Price	\$2,800
Bedrooms	4
Bathrooms	3.00
Full Baths	3
Square Footage	1,666
Acres	0.00
Type	Rental



Status	Active
--------	--------

Community Information

Address	8810 126 Avenue
Subdivision	Crystal Lake Estates
City	Grande Prairie
County	Grande Prairie
Province	Alberta
Postal Code	T8X1P3

Amenities

Parking	Double Garage Attached
---------	------------------------

Interior

Appliances	Dishwasher, Oven, Range Hood, Refrigerator, Stove(s), Washer/Dryer
------------	--

Exterior

Roof	Asphalt Shingle
------	-----------------

Additional Information

Date Listed	September 18th, 2025
Days on Market	1

Listing Details

Listing Office	Grassroots Realty Group Ltd.
----------------	------------------------------

Data is supplied by Pillar 9â„¢ MLSÂ® System. Pillar 9â„¢ is the owner of the copyright in its MLSÂ® System. Data is deemed reliable but is not guaranteed accurate by Pillar 9â„¢. The trademarks MLSÂ®, Multiple Listing ServiceÂ® and the associated logos are owned by The Canadian Real Estate Association (CREA) and identify the quality of services provided by real estate professionals who are members of CREA. Used under license.