

# \$339,900 - 220, 1535 Southview Drive Se, Medicine Hat

MLS® #A2257622

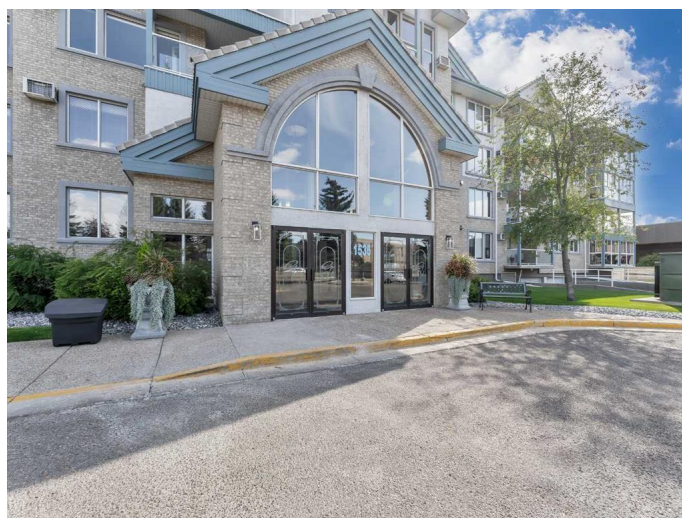
**\$339,900**

2 Bedroom, 2.00 Bathroom, 1,229 sqft

Residential on 0.00 Acres

Southview-Park Meadows, Medicine Hat, Alberta

This exceptional second-floor unit offers over 1200 sq ft of beautifully upgraded living space with an open-concept design that is both warm and inviting. A spacious entryway leads to the living and dining areas, where large east-facing windows provide abundant natural light, morning sunshine, and afternoon shade, complemented by a built-in wall unit with an electric fireplace. The kitchen features Corian countertops, newer appliances, and ample pantry space, while the guest bedroom and renovated 3-piece bath with walk-in shower are conveniently located nearby. The primary suite includes three large closets, a 4-piece ensuite with stunning tile, and part of a new mini-split A/C system shared with the living room for year-round comfort. Additional highlights include a laundry room with storage, a den enclosed by elegant French doors, and an enclosed 14 X 10 deck overlooking a mature, treed area. Residents of Grandview Village enjoy outstanding amenities such as a swimming pool, library, games room, boardrooms, workshop, patio, RV parking (when available), and two elevators, with storage conveniently located near the parking stall. The unit is nice and close to the garbage chute and elevator. Close to shopping and services, this home is the perfect place to downsize and enjoy a simpler, more comfortable lifestyle. Contact your friendly local neighbourhood REALTOR® today!



Built in 1995

## Essential Information

MLS® #	A2257622
Price	\$339,900
Bedrooms	2
Bathrooms	2.00
Full Baths	2
Square Footage	1,229
Acres	0.00
Year Built	1995
Type	Residential
Sub-Type	Apartment
Style	Single Level Unit
Status	Active

## Community Information

Address	220, 1535 Southview Drive Se
Subdivision	Southview-Park Meadows
City	Medicine Hat
County	Medicine Hat
Province	Alberta
Postal Code	T1B 4H8

## Amenities

Amenities	Elevator(s), Fitness Center, Guest Suite, Parking, Party Room, Recreation Room, Secured Parking, Storage, Visitor Parking, Indoor Pool, Spa/Hot Tub
Parking Spaces	1
Parking	Assigned, Garage Door Opener, Underground

## Interior

Interior Features	French Door, Open Floorplan, Pantry, Recreation Facilities, Vinyl Windows
Appliances	Dishwasher, Garage Control(s), Microwave, Range Hood, Refrigerator, Stove(s), Washer/Dryer, Window Coverings
Heating	Baseboard, Hot Water
Cooling	Wall Unit(s)
Fireplace	Yes
# of Fireplaces	1

Fireplaces	Electric
# of Stories	4

## Exterior

Exterior Features	Balcony, Storage, Uncovered Courtyard
Construction	Mixed

## Additional Information

Date Listed	October 2nd, 2025
Days on Market	1
Zoning	R-MD

## Listing Details

Listing Office	RE/MAX MEDALTA REAL ESTATE
----------------	----------------------------

Data is supplied by Pillar 9â„¢ MLS® System. Pillar 9â„¢ is the owner of the copyright in its MLS® System. Data is deemed reliable but is not guaranteed accurate by Pillar 9â„¢. The trademarks MLS®, Multiple Listing Service® and the associated logos are owned by The Canadian Real Estate Association (CREA) and identify the quality of services provided by real estate professionals who are members of CREA. Used under license.