

# \$599,900 - 133 Sunwood Crescent Sw, Medicine Hat

MLS® #A2257240

**\$599,900**

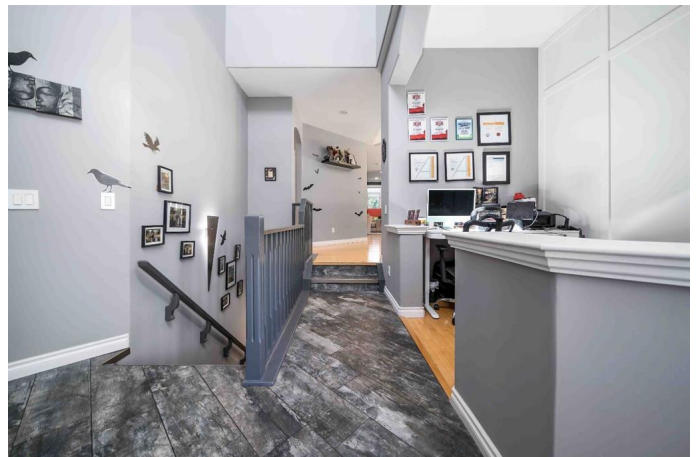
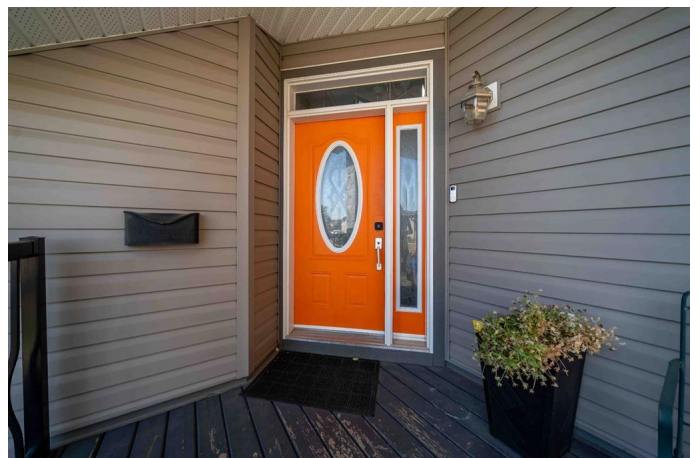
4 Bedroom, 3.00 Bathroom, 1,609 sqft

Residential on 0.12 Acres

SW Southridge, Medicine Hat, Alberta

This impressive 4-bedroom bungalow with a dedicated office space, offers over 3,000 sq. ft. of beautifully finished living space!

Floor-to-ceiling windows in the main floor family and dining areas, combined with skylights in the kitchen and main bath, create a home that is bright, airy, and inviting. Perfectly located backing onto a tranquil green space and just a short walk to a playground and water park, this home offers both privacy and convenience. The spacious foyer with vaulted ceilings welcomes you inside, leading to a chef-inspired kitchen featuring a large island, walk-in pantry, abundant cabinetry with unique details, updated tile flooring, and a full stainless steel appliance package (all within 3 years old). A gas hook-up is also available if a gas range is preferred. The luxurious primary suite is a true retreat, complete with a spa-like 5-piece ensuite featuring double vanities, a jetted corner tub, and a separate shower. The main floor also includes a cozy living room with a gas fireplace, a second bedroom, a 4-piece bath, and a well-appointed laundry room with a newer washer and dryer (3 years old). Step through the sliding patio doors to a backyard designed for relaxation and entertaining, featuring a composite deck with BBQ gas hook-up, a fully landscaped and fenced yard, underground sprinklers, and direct access to walking paths and green space. The lower level boasts 9-ft ceilings and an incredible layout with two oversized bedrooms, each with exceptional walk-in



closets, a stylish 4-piece bathroom with heated tile floors and a walk-in shower, and a spacious theatre/games room with a second gas fireplace. To complete the basement is a great sized room with no windows that can be used as a den, or a big storage room. Built with quality in mind, this home includes silent floor joists, soundproofed doors, and extra insulation for enhanced comfort and peace of mind. A heated double attached garage adds convenience, while recent updates provide even more value, including a hot water tank (4 years), furnace coil (2 years), added attic insulation (2 years), LED lighting, freshly refinished cabinets & railings and composite rear decking. If youâ€™ve been searching for a move-in ready home with space, style, and an unbeatable location, this is the one!

Built in 2005

### Essential Information

MLS® #	A2257240
Price	\$599,900
Bedrooms	4
Bathrooms	3.00
Full Baths	3
Square Footage	1,609
Acres	0.12
Year Built	2005
Type	Residential
Sub-Type	Detached
Style	Bungalow
Status	Active

### Community Information

Address	133 Sunwood Crescent Sw
Subdivision	SW Southridge
City	Medicine Hat
County	Medicine Hat

Province	Alberta
Postal Code	T1B4Y7

### Amenities

Parking Spaces	4
Parking	Double Garage Attached
# of Garages	2

### Interior

Interior Features	Breakfast Bar, Built-in Features, Ceiling Fan(s), Central Vacuum, Closet Organizers, Double Vanity, High Ceilings, Jetted Tub, Kitchen Island, Pantry, Quartz Counters, Storage, Vaulted Ceiling(s), Walk-In Closet(s), Skylight(s)
Appliances	See Remarks
Heating	Forced Air
Cooling	Central Air
Fireplace	Yes
# of Fireplaces	2
Fireplaces	Basement, Gas, Living Room
Has Basement	Yes
Basement	Finished, Full

### Exterior

Exterior Features	None
Lot Description	Backs on to Park/Green Space, Landscaped, No Neighbours Behind, Underground Sprinklers, Greenbelt
Roof	Asphalt Shingle
Construction	Vinyl Siding
Foundation	Wood

### Additional Information

Date Listed	September 28th, 2025
Days on Market	1
Zoning	R-LD

### Listing Details

Listing Office	EXP REALTY
----------------	------------

Data is supplied by Pillar 9â„¢ MLS® System. Pillar 9â„¢ is the owner of the copyright in its MLS® System. Data is deemed reliable but is not guaranteed accurate by Pillar 9â„¢. The trademarks MLS®, Multiple Listing Service® and the associated logos are owned by The Canadian Real Estate Association (CREA) and identify the quality of services

