

\$4,600,000 - Twp 360 Rr. 43, Rural Clearwater County

MLS® #A2257013

\$4,600,000

0 Bedroom, 0.00 Bathroom,
Agri-Business on 0.00 Acres

NONE, Rural Clearwater County, Alberta

FULL SECTION IN ONE BLOCK. FIVE
TITLES TOTALLING 644 ACRES ALL IN
PASTURE, TREES, RECREATION.
EXTREMELY RARE FIND LOCATED WEST
OF INNISFAIL , BETWEEN SPRUCE VIEW
AND CAROLINE.

Essential Information

MLS® #	A2257013
Price	\$4,600,000
Bathrooms	0.00
Acres	0.00
Type	Agri-Business
Sub-Type	Agriculture
Status	Active

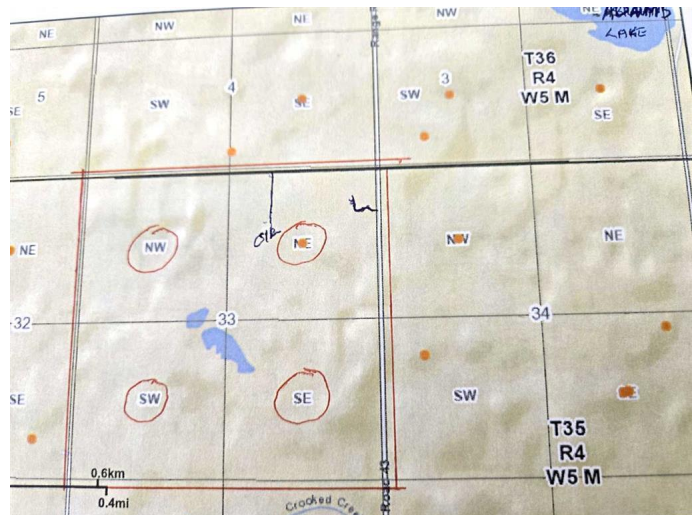
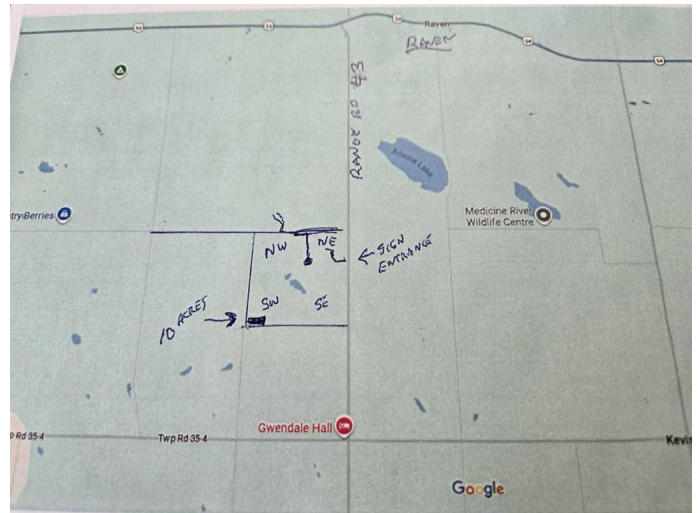
Community Information

Address	Twp 360 Rr. 43
Subdivision	NONE
City	Rural Clearwater County
County	Clearwater County
Province	Alberta
Postal Code	T4G2V0

Additional Information

Date Listed	September 14th, 2025
Zoning	AG

Listing Details



Listing Office

RE/MAX real estate central alberta

Data is supplied by Pillar 9â„¢ MLSÂ® System. Pillar 9â„¢ is the owner of the copyright in its MLSÂ® System. Data is deemed reliable but is not guaranteed accurate by Pillar 9â„¢. The trademarks MLSÂ®, Multiple Listing ServiceÂ® and the associated logos are owned by The Canadian Real Estate Association (CREA) and identify the quality of services provided by real estate professionals who are members of CREA. Used under license.