

# \$125,000 - 9122 Township Road 574, Rural Lac Ste. Anne County

---

MLS® #A2256985

**\$125,000**

0 Bedroom, 0.00 Bathroom,  
Land on 5.08 Acres

NONE, Rural Lac Ste. Anne County, Alberta

Acreage ready 5.08 acres with power at the property, an existing well, natural gas line, driveway, and more. This property is surrounded by farm fields and not in a subdivision. Once a former homestead located a short scenic drive from Mayerthorpe, Whitecourt, Blue Ridge, or Spruce Grove. Whether you are looking to build, garden, raise chickens, PLUS enjoy the country - this could be your dream home.

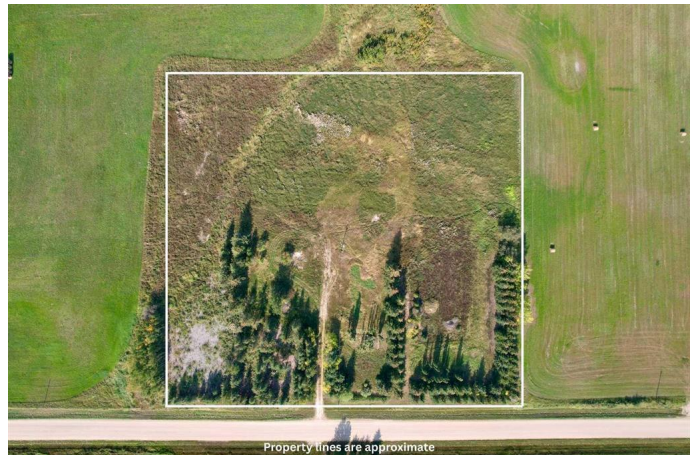
## Essential Information

MLS® #	A2256985
Price	\$125,000
Bathrooms	0.00
Acres	5.08
Type	Land
Sub-Type	Residential Land
Status	Active

## Community Information

Address	9122 Township Road 574
Subdivision	NONE
City	Rural Lac Ste. Anne County
County	Lac Ste. Anne County
Province	Alberta
Postal Code	T0E 1N0

## Amenities



Utilities Electricity Purchaser to Verify

### **Additional Information**

Date Listed September 13th, 2025  
Zoning COUNTRY LIVING RESIDENTIA

### **Listing Details**

Listing Office ROYAL LEPAGE MODERN REALTY

Data is supplied by Pillar 9â„¢ MLS® System. Pillar 9â„¢ is the owner of the copyright in its MLS® System. Data is deemed reliable but is not guaranteed accurate by Pillar 9â„¢. The trademarks MLS®, Multiple Listing Service® and the associated logos are owned by The Canadian Real Estate Association (CREA) and identify the quality of services provided by real estate professionals who are members of CREA. Used under license.