

# \$289,000 - 140 20 Street N, Lethbridge

MLS® #A2255867

## \$289,000

2 Bedroom, 1.00 Bathroom, 819 sqft

Residential on 0.09 Acres

Westminster, Lethbridge, Alberta

This renovated home is move-in ready with everything already done for you. Featuring 2 bedrooms and 1 full 4-piece bathroom, it offers an open-concept dining and living room.

Updates include a roof (approx. 5 years old), newer furnace, newer hot water tank, updated windows, new flooring, plus a new kitchen and bathroom.

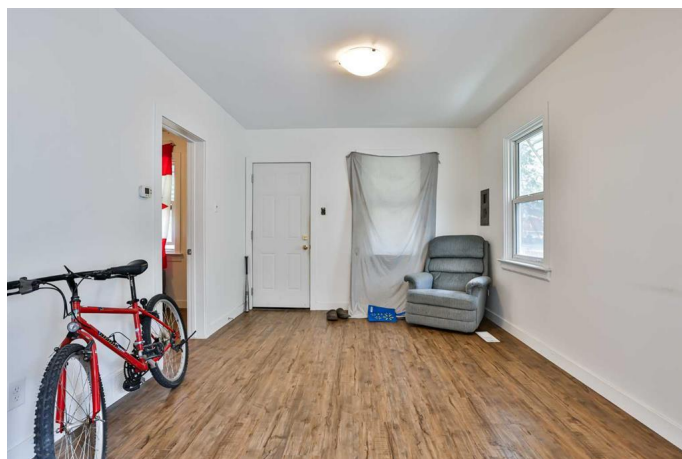
The property is fully fenced and includes a backyard space and a double detached garage for vehicles, storage, or projects.

An excellent opportunity to own a home with everything ready for you.

Built in 1930

## Essential Information

MLS® #	A2255867
Price	\$289,000
Bedrooms	2
Bathrooms	1.00
Full Baths	1
Square Footage	819
Acres	0.09
Year Built	1930
Type	Residential
Sub-Type	Detached
Style	Bungalow



Status	Active
--------	--------

### Community Information

Address	140 20 Street N
Subdivision	Westminster
City	Lethbridge
County	Lethbridge
Province	Alberta
Postal Code	T1H 3M5

### Amenities

Parking Spaces	2
Parking	Double Garage Detached
# of Garages	2

### Interior

Interior Features	Storage
Appliances	Refrigerator, Stove(s), Washer/Dryer
Heating	Forced Air
Cooling	None
Basement	None

### Exterior

Exterior Features	None
Lot Description	Back Lane, Back Yard
Roof	Asphalt Shingle
Construction	Vinyl Siding
Foundation	Poured Concrete

### Additional Information

Date Listed	September 10th, 2025
Days on Market	1
Zoning	R-L(W)

### Listing Details

Listing Office	RE/MAX REAL ESTATE - LETHBRIDGE
----------------	---------------------------------

Data is supplied by Pillar 9â„¢ MLS® System. Pillar 9â„¢ is the owner of the copyright in its MLS® System. Data is deemed reliable but is not guaranteed accurate by Pillar 9â„¢. The trademarks MLS®, Multiple Listing Service® and the associated logos are owned by The Canadian Real Estate Association (CREA) and identify the quality of services provided by real estate professionals who are members of CREA. Used under license.