

# \$141,750 - 3607 Lakeshore Drive, Bonnyville

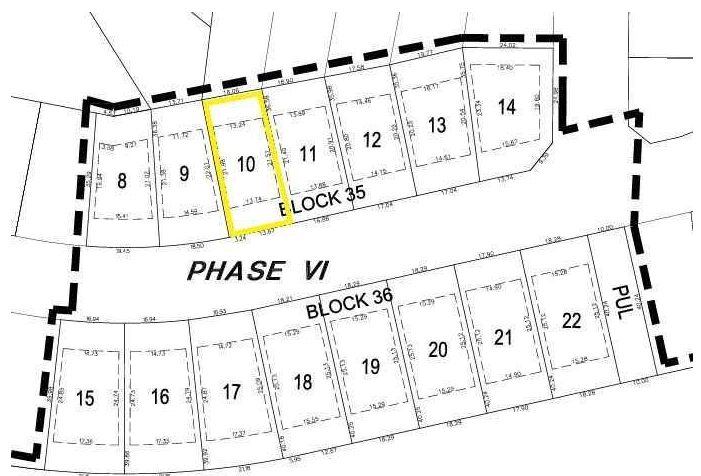
MLS® #A2255370

**\$141,750**

0 Bedroom, 0.00 Bathroom,  
Land on 0.15 Acres

Bonnyville, Bonnyville, Alberta

Wake up to panoramic lake views in Lakeview Estates, a quiet nature-set community along Jesse Lake. This large 55 ft wide, fully serviced lot is ready for your custom home, with room for an oversized garage. Fall colors, migrating birds, and open skies create a magical setting for family living. Now is the time to build "€" with a \$25,000 new build incentive and up to 5 years property tax holiday from the Town of Bonnyville. Listing agent has an indirect interest in the property.



## Essential Information

MLS® #	A2255370
Price	\$141,750
Bathrooms	0.00
Acres	0.15
Type	Land
Sub-Type	Residential Land
Status	Active

## Community Information

Address	3607 Lakeshore Drive
Subdivision	Bonnyville
City	Bonnyville
County	Bonnyville No. 87, M.D. of
Province	Alberta
Postal Code	T9N 0E8

## Amenities

Utilities	Cable Available, Electricity at Lot Line, Water At Lot Line, Natural Gas at Lot Line, Fiber Optics at Lot Line, High Speed Internet Available, Phone At Lot Line, Underground Utilities
-----------	---

## Exterior

Lot Description	Level, Lake
-----------------	-------------

## School Information

District	Northern Lights School Division No. 69
----------	--

## Additional Information

Date Listed	September 8th, 2025
-------------	---------------------

Days on Market	2
----------------	---

Zoning	R1
--------	----

## Listing Details

Listing Office	MaxWell Capital Realty
----------------	------------------------

Data is supplied by Pillar 9â„¢ MLS® System. Pillar 9â„¢ is the owner of the copyright in its MLS® System. Data is deemed reliable but is not guaranteed accurate by Pillar 9â„¢. The trademarks MLS®, Multiple Listing Service® and the associated logos are owned by The Canadian Real Estate Association (CREA) and identify the quality of services provided by real estate professionals who are members of CREA. Used under license.