

# \$440,000 - 461 Lynx Terrace N, Lethbridge

MLS® #A2252298

**\$440,000**

3 Bedroom, 2.00 Bathroom, 953 sqft

Residential on 0.08 Acres

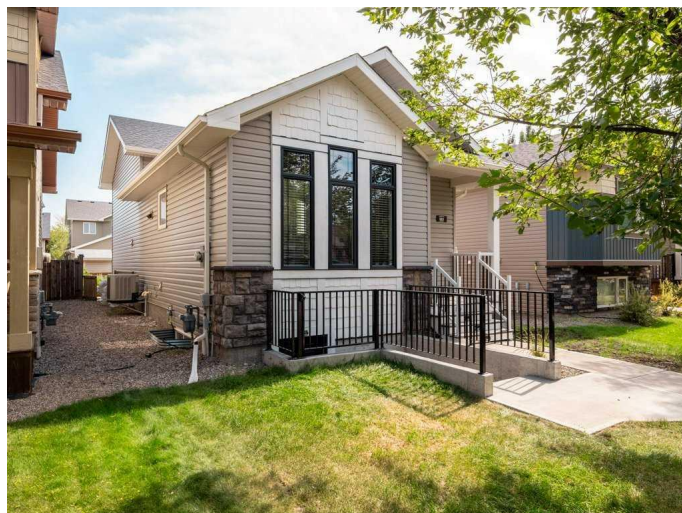
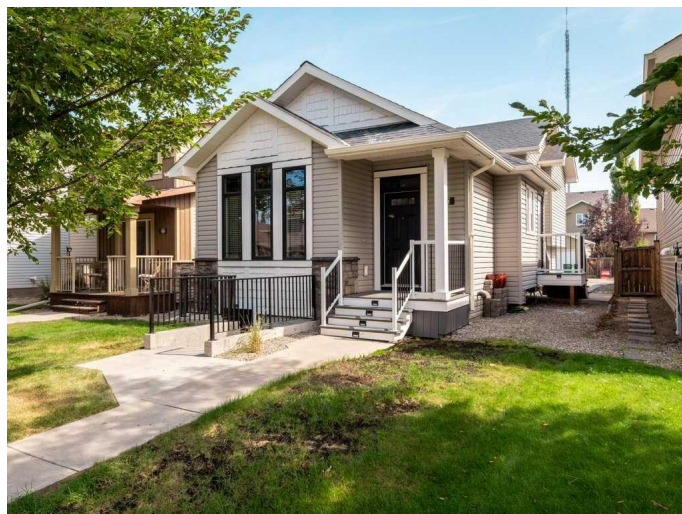
Blackwolf 1, Lethbridge, Alberta

This 4-level split is the perfect family home, ideally located in a quiet area close to Legacy Park. The open-concept main floor features a bright kitchen, dining, and living space with a spindle staircase leading to two spacious bedrooms and a full bath, while the third level offers another bedroom and bathroom. The fourth level is open for future development and already has a separate entrance, making it ideal for a suite with space for a kitchen, dining, and living area. This home includes a tankless hot water heater, central air and a dual-zone furnace. Outside, youâ€™™ll find a concrete patio, sidewalk, and double parking pad, with all kitchen appliances plus washer and dryer includedâ€™™making this a move-in ready home in an excellent location.

Built in 2011

## Essential Information

MLS® #	A2252298
Price	\$440,000
Bedrooms	3
Bathrooms	2.00
Full Baths	2
Square Footage	953
Acres	0.08
Year Built	2011
Type	Residential
Sub-Type	Detached



Style	4 Level Split
Status	Active

### Community Information

Address	461 Lynx Terrace N
Subdivision	Blackwolf 1
City	Lethbridge
County	Lethbridge
Province	Alberta
Postal Code	T1H 6Z9

### Amenities

Parking Spaces	2
Parking	Parking Pad

### Interior

Interior Features	Jetted Tub, Open Floorplan, Separate Entrance, Tankless Hot Water, Vaulted Ceiling(s)
Appliances	Dishwasher, Electric Range, Microwave Hood Fan, Refrigerator, Tankless Water Heater, Washer/Dryer
Heating	Forced Air
Cooling	Central Air
Has Basement	Yes
Basement	Partial, Partially Finished

### Exterior

Exterior Features	Garden
Lot Description	Back Lane, Front Yard, Garden, Landscaped, Rectangular Lot
Roof	Asphalt Shingle
Construction	Vinyl Siding, Wood Frame
Foundation	Poured Concrete

### Additional Information

Date Listed	August 28th, 2025
Days on Market	5
Zoning	R-M

### Listing Details

Listing Office	2 PERCENT REALTY
----------------	------------------

Data is supplied by Pillar 9â„¢ MLSÂ® System. Pillar 9â„¢ is the owner of the copyright in its MLSÂ® System. Data is

deemed reliable but is not guaranteed accurate by Pillar 9â„¸. The trademarks MLS®®, Multiple Listing Service® and the associated logos are owned by The Canadian Real Estate Association (CREA) and identify the quality of services provided by real estate professionals who are members of CREA. Used under license.