

\$539,900 - 25 Lakeland Road, Sylvan Lake

MLS® #A2251811

\$539,900

4 Bedroom, 3.00 Bathroom, 1,218 sqft

Residential on 0.14 Acres

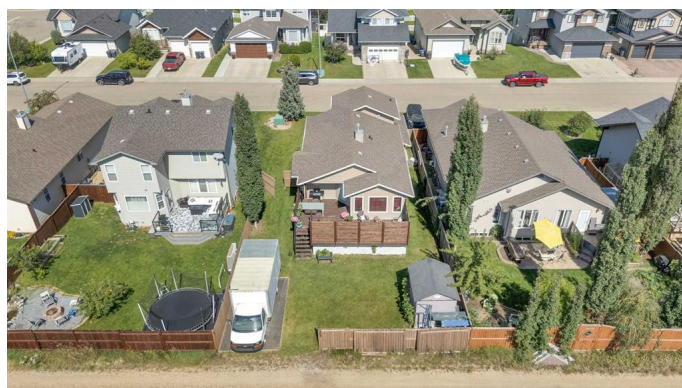
Lakeway Landing, Sylvan Lake, Alberta

This beautifully maintained modified bi-level offering 4 bedrooms (plus den) and 3 full bathrooms is the perfect fit for families of all sizes. Step inside to a bright and inviting main floor with soaring vaulted ceilings and an abundance of natural light streaming through oversized windows. The freshly painted interior and stylish white kitchen create a modern, airy feel, while the no-carpet design adds both comfort and convenience for easy maintenance. The spacious primary suite features its own private level, while the fully finished basement provides additional living space with room for family, guests, or a home office. Outdoors, enjoy the fully fenced yard with a large deck complete with privacy slats—ideal for summer gatherings or simply relaxing in your own private retreat. This home combines function and style in a sought-after community, just minutes from schools, parks, and all the amenities Sylvan Lake has to offer.

Built in 2007

Essential Information

MLS® #	A2251811
Price	\$539,900
Bedrooms	4
Bathrooms	3.00
Full Baths	3
Square Footage	1,218
Acres	0.14



Year Built	2007
Type	Residential
Sub-Type	Detached
Style	Modified Bi-Level
Status	Active

Community Information

Address	25 Lakeland Road
Subdivision	Lakeway Landing
City	Sylvan Lake
County	Red Deer County
Province	Alberta
Postal Code	T4S 0A3

Amenities

Parking Spaces	2
Parking	Alley Access, Concrete Driveway, Double Garage Attached, Garage Door Opener
# of Garages	2

Interior

Interior Features	Ceiling Fan(s), Kitchen Island, Pantry, Quartz Counters, Vaulted Ceiling(s), Vinyl Windows, Walk-In Closet(s)
Appliances	Central Air Conditioner, Dishwasher, Garage Control(s), Refrigerator, Stove(s), Washer/Dryer, Window Coverings
Heating	Forced Air, Natural Gas
Cooling	Central Air
Has Basement	Yes
Basement	Finished, Full

Exterior

Exterior Features	Other
Lot Description	Back Lane, Fruit Trees/Shrub(s), Landscaped
Roof	Asphalt Shingle
Construction	Vinyl Siding, Wood Frame
Foundation	Poured Concrete

Additional Information

Date Listed	August 27th, 2025
Zoning	R1

Listing Details

Listing Office KIC Realty

Data is supplied by Pillar 9â„¢ MLS® System. Pillar 9â„¢ is the owner of the copyright in its MLS® System. Data is deemed reliable but is not guaranteed accurate by Pillar 9â„¢. The trademarks MLS®, Multiple Listing Service® and the associated logos are owned by The Canadian Real Estate Association (CREA) and identify the quality of services provided by real estate professionals who are members of CREA. Used under license.