

\$434,900 - 6419 26 Avenue Ne, Calgary

MLS® #A2251446

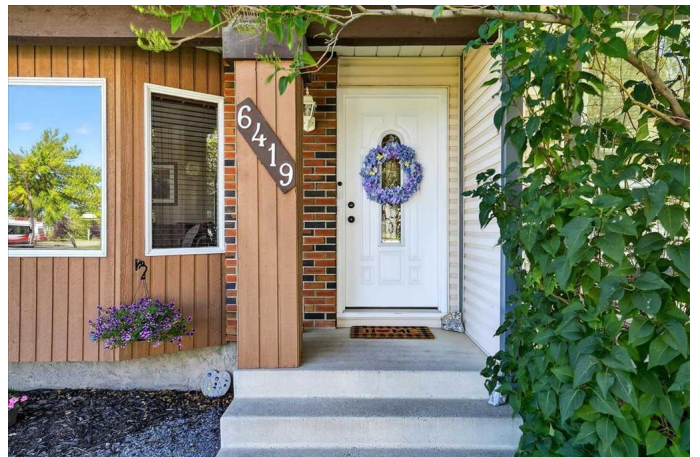
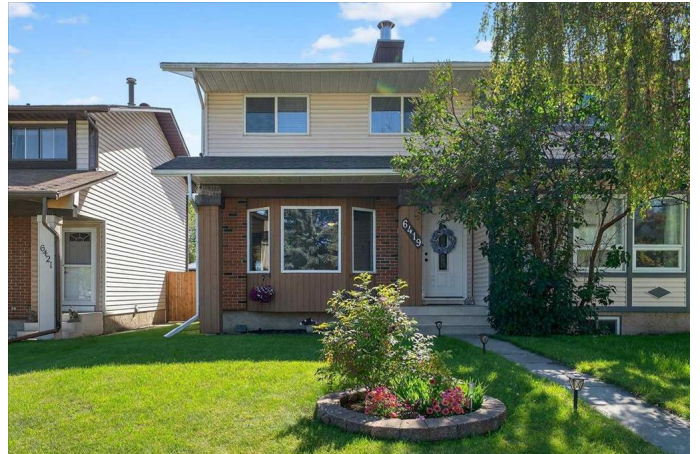
\$434,900

3 Bedroom, 2.00 Bathroom, 1,208 sqft

Residential on 0.07 Acres

Pineridge, Calgary, Alberta

Stylish, Upgraded and Move-In Ready! This charming semi-detached home is a meticulously maintained gem where pride of ownership shines in every detail. From the moment you enter, you'll be welcomed by a warm and inviting living room anchored by a charming wood-burning fireplace, perfect for cozy winter evenings. The eat-in kitchen features updated cabinets, stainless steel appliances, a fabulous pantry, laminate countertops, modern lighting, and upgraded flooring that ties it all together. A beautifully refreshed powder room completes the main floor with style and function. Upstairs, you'll find three generously sized bedrooms and a full bathroom boasting upgraded tub and surround, vanity, toilet, lighting, and flooring. The developed lower level offers a family room, a well-equipped laundry area with washer, dryer, and laundry tub, plus abundant storage and space for a potential fourth bedroom. The back yard offers a two-tiered deck and a nicely landscaped yard that includes the hot tub as well as a 9x14 insulated, wired shed (with additional storage, workbench, and cupboards), RV parking, and space for a future double garage. Updates over the years include roofing shingles (2010), furnace (2011), hot water tank (2019), deck boards (2021), Smart Technology appliances (2022), upper toilet (2023), washer & dryer (2024), rainfall showerhead (2024), interior doors, windows, and custom blinds. Located diagonally across from Pinecliff Park



and close to schools, shopping, transit, and every amenity. Convenient to Deerfoot and Stoney Trails. List of area schools available. Viewing times are available after 5 pm Monday-Friday, or during the day on weekends. Book today so you don't miss out. We can't wait to show you around!

Built in 1978

Essential Information

MLS® #	A2251446
Price	\$434,900
Bedrooms	3
Bathrooms	2.00
Full Baths	1
Half Baths	1
Square Footage	1,208
Acres	0.07
Year Built	1978
Type	Residential
Sub-Type	Semi Detached
Style	2 Storey, Side by Side
Status	Active

Community Information

Address	6419 26 Avenue Ne
Subdivision	Pineridge
City	Calgary
County	Calgary
Province	Alberta
Postal Code	T1Y 4H2

Amenities

Parking Spaces	2
Parking	Alley Access, Off Street, Parking Pad, Side By Side

Interior

Interior Features	Ceiling Fan(s), No Smoking Home, Pantry, Storage, Vinyl Windows
-------------------	---

Appliances	Dishwasher, Electric Range, Microwave, Range Hood, Refrigerator, Washer/Dryer, Window Coverings
Heating	Forced Air
Cooling	None
Fireplace	Yes
# of Fireplaces	1
Fireplaces	Living Room, Wood Burning
Has Basement	Yes
Basement	Full, Partially Finished

Exterior

Exterior Features	Private Yard, Storage
Lot Description	Back Lane, Back Yard, Front Yard, Level, Low Maintenance Landscape, Rectangular Lot
Roof	Asphalt Shingle
Construction	Brick, Vinyl Siding, Wood Frame
Foundation	Poured Concrete

Additional Information

Date Listed	August 26th, 2025
Days on Market	1
Zoning	R-CG

Listing Details

Listing Office	Royal LePage Benchmark
----------------	------------------------

Data is supplied by Pillar 9â„¢ MLSÂ® System. Pillar 9â„¢ is the owner of the copyright in its MLSÂ® System. Data is deemed reliable but is not guaranteed accurate by Pillar 9â„¢. The trademarks MLSÂ®, Multiple Listing ServiceÂ® and the associated logos are owned by The Canadian Real Estate Association (CREA) and identify the quality of services provided by real estate professionals who are members of CREA. Used under license.