

\$125,900 - 308, 205 12 Avenue Sw, Slave Lake

MLS® #A2250349

\$125,900

2 Bedroom, 1.00 Bathroom, 995 sqft

Residential on 0.00 Acres

NONE, Slave Lake, Alberta

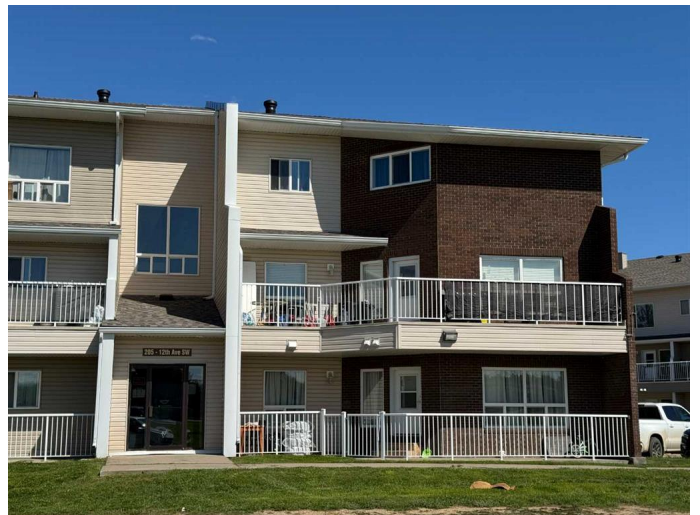
Corner unit!! Two bedrooms and a huge open space for dining, living, office including in-suite laundry... AND a lovely outside deck to enjoy the views of Slave Lake! One parking stall and condo fees covering general exterior maintenance, general insurance, reserve fund.

Upgrades include quartz kitchen countertops, stunning tile in bathroom and bathroom vanity, Plus vinyl laminate through kitchen, dining room and spacious living room. If you're looking to invest! Grizzly Ridge is located on SW corner of town and within walking distance to Cornerstone Retail, McDonald's, Northern Lakes College (swimming pool) and the multi-rec centre.

Built in 1978

Essential Information

MLS® #	A2250349
Price	\$125,900
Bedrooms	2
Bathrooms	1.00
Full Baths	1
Square Footage	995
Acres	0.00
Year Built	1978
Type	Residential
Sub-Type	Apartment
Style	Multi Level Unit
Status	Active



Community Information

Address	308, 205 12 Avenue Sw
Subdivision	NONE
City	Slave Lake
County	Lesser Slave River No. 124, M.D. of
Province	Alberta
Postal Code	T0G2A4

Amenities

Amenities	None
Parking Spaces	1
Parking	Guest, Parking Pad, Asphalt, Parking Lot

Interior

Interior Features	Storage
Appliances	Dishwasher, Dryer, Electric Stove, Refrigerator, Washer
Heating	Baseboard, Hot Water
Cooling	None
# of Stories	3

Exterior

Exterior Features	None
Construction	Brick, Vinyl Siding

Additional Information

Date Listed	August 21st, 2025
Zoning	R3A

Listing Details

Listing Office	ROYAL LEPAGE PROGRESSIVE REALTY
----------------	---------------------------------

Data is supplied by Pillar 9â„¢ MLS® System. Pillar 9â„¢ is the owner of the copyright in its MLS® System. Data is deemed reliable but is not guaranteed accurate by Pillar 9â„¢. The trademarks MLS®, Multiple Listing Service® and the associated logos are owned by The Canadian Real Estate Association (CREA) and identify the quality of services provided by real estate professionals who are members of CREA. Used under license.