

# \$45,000 - 16, 6834 59 Avenue, Red Deer

MLS® #A2249740

## \$45,000

3 Bedroom, 1.00 Bathroom, 896 sqft

Mobile on 0.00 Acres

Mustang Acres, Red Deer, Alberta

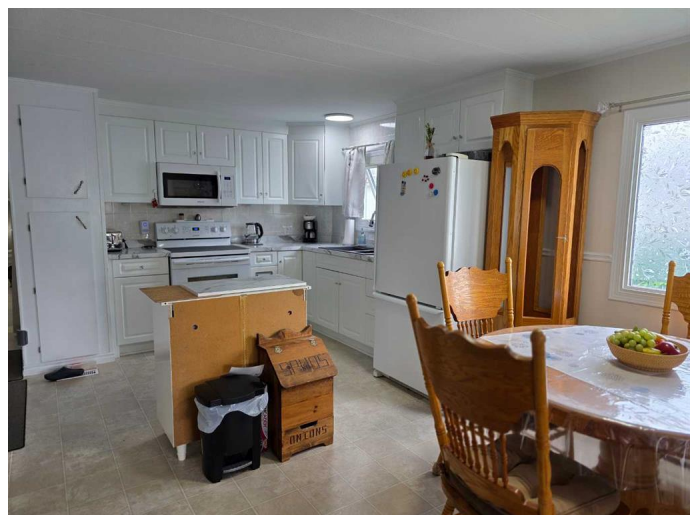
This bright and welcoming home is ideal for downsizers or those looking to start a new chapter. Located across from the park, it features a sun-filled living room perfect for entertaining, a kitchen with crisp white cabinets and updated countertops, and a spacious primary bedroom. The third bedroom, currently used for storage, includes a freezer and storage closet. Enjoy outdoor living with a private upper seating area, block patio, and large deck. Upgrades include new paint (2020), furnace (2017), ductwork, flooring, plumbing, electrical, insulation, and some newer windows.

Built in 1974

## Essential Information

MLS® #	A2249740
Price	\$45,000
Bedrooms	3
Bathrooms	1.00
Full Baths	1
Square Footage	896
Acres	0.00
Year Built	1974
Type	Mobile
Sub-Type	Mobile
Style	Single Wide Mobile Home
Status	Active

## Community Information



Address	16, 6834 59 Avenue
Subdivision	Mustang Acres
City	Red Deer
County	Red Deer
Province	Alberta
Postal Code	T4P1C9

### **Amenities**

Parking Spaces	2
Parking	Parking Pad

### **Interior**

Interior Features	No Smoking Home
Appliances	Dryer, Electric Stove, Freezer, Microwave, Refrigerator, Washer
Heating	Forced Air, Natural Gas

### **Exterior**

Roof	Metal
Foundation	Piling(s)

### **Additional Information**

Date Listed	August 18th, 2025
Days on Market	2

### **Listing Details**

Listing Office	Coldwell Banker OnTrack Realty
----------------	--------------------------------

Data is supplied by Pillar 9â„¢ MLSÂ® System. Pillar 9â„¢ is the owner of the copyright in its MLSÂ® System. Data is deemed reliable but is not guaranteed accurate by Pillar 9â„¢. The trademarks MLSÂ®, Multiple Listing ServiceÂ® and the associated logos are owned by The Canadian Real Estate Association (CREA) and identify the quality of services provided by real estate professionals who are members of CREA. Used under license.