

# \$85,000 - 1, 70531 Rge Rd 244, Rural Greenview No. 16, M.D. of

MLS® #A2248649

**\$85,000**

0 Bedroom, 0.00 Bathroom,  
Land on 0.74 Acres

NONE, Rural Greenview No. 16, M.D. of,  
Alberta

Vacant lot in Eagle Ridge Estates, just steps away from Sturgeon Lake and Greenview Golf Course. CR-3 zoning allowing residential or recreational use—build a year-round home, seasonal getaway, or rental. Enjoy a peaceful setting with easy access to boating, fishing (or ice fishing), and golf. A rare opportunity in a great location where nature, recreation, and relaxation meet.

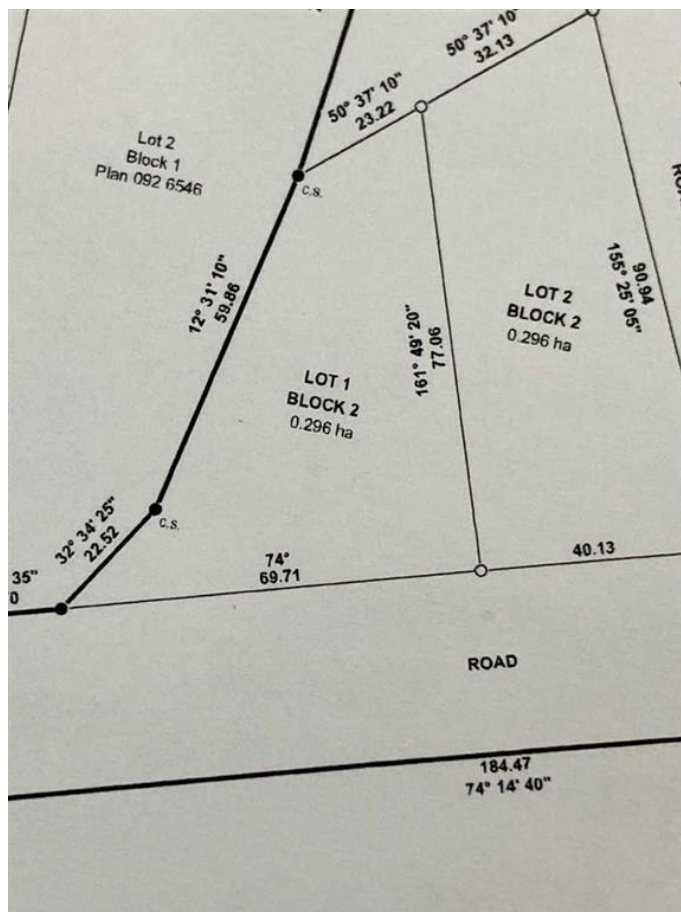
## Essential Information

MLS® #	A2248649
Price	\$85,000
Bathrooms	0.00
Acres	0.74
Type	Land
Sub-Type	Residential Land
Status	Active

## Community Information

Address	1, 70531 Rge Rd 244
Subdivision	NONE
City	Rural Greenview No. 16, M.D. of
County	Greenview No. 16, M.D. of
Province	Alberta
Postal Code	T0H 0P0

## Amenities



Utilities Electricity at Lot Line, Natural Gas at Lot Line

### **Additional Information**

Date Listed August 13th, 2025

Days on Market 1

Zoning CR3

### **Listing Details**

Listing Office Century 21 Grande Prairie Realty Inc.

Data is supplied by Pillar 9â„¢ MLSÂ® System. Pillar 9â„¢ is the owner of the copyright in its MLSÂ® System. Data is deemed reliable but is not guaranteed accurate by Pillar 9â„¢. The trademarks MLSÂ®, Multiple Listing ServiceÂ® and the associated logos are owned by The Canadian Real Estate Association (CREA) and identify the quality of services provided by real estate professionals who are members of CREA. Used under license.