

# \$619,000 - 105, 110 Beaver Street, Banff

MLS® #A2248639

**\$619,000**

2 Bedroom, 1.00 Bathroom, 734 sqft

Residential on 0.00 Acres

NONE, Banff, Alberta

Excellent entry level two bedroom condo on main level with balcony and heated secure parking. Located in the heart of Banff, just steps away from shops, cafes, restaurants, and the Beautiful Bow River. This spacious 734 sq.ft. home features two large bedrooms, four piece bath, spacious kitchen, living room, eating area, and pantry. This is an excellent opportunity to enter the Banff market!

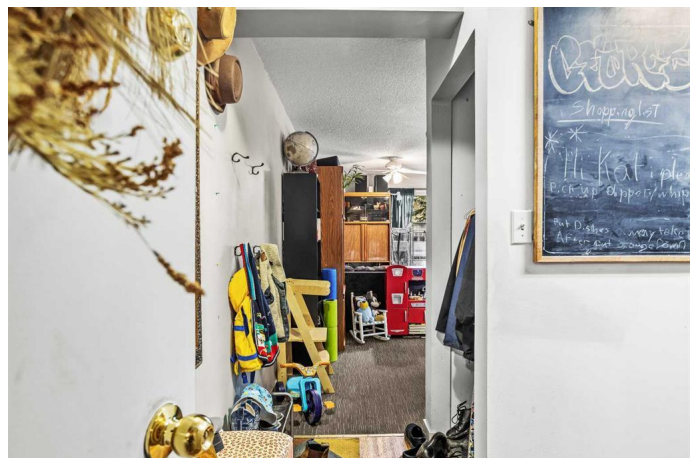
Built in 1993

## Essential Information

MLS® #	A2248639
Price	\$619,000
Bedrooms	2
Bathrooms	1.00
Full Baths	1
Square Footage	734
Acres	0.00
Year Built	1993
Type	Residential
Sub-Type	Apartment
Style	Single Level Unit
Status	Active

## Community Information

Address	105, 110 Beaver Street
Subdivision	NONE
City	Banff



County	Improvement District No. 09 (Banff)
Province	Alberta
Postal Code	T1L1E3

### Amenities

Amenities	Coin Laundry, Secured Parking
Utilities	Cable Connected
Parking Spaces	1
Parking	Assigned, Parkade, Rear Drive, Secured, Underground

### Interior

Interior Features	See Remarks
Appliances	Dishwasher, Electric Stove, Refrigerator, Window Coverings
Heating	Baseboard, Boiler, Central, Hot Water, Natural Gas, Radiant
Cooling	None
# of Stories	3
Basement	None

### Exterior

Exterior Features	Balcony
Roof	Asphalt
Construction	Stucco, Wood Frame
Foundation	Poured Concrete

### Additional Information

Date Listed	August 14th, 2025
Days on Market	2
Zoning	RCM-Central Muskrat Dist.

### Listing Details

Listing Office	RE/MAX Alpine Realty
----------------	----------------------

Data is supplied by Pillar 9â„¢ MLS® System. Pillar 9â„¢ is the owner of the copyright in its MLS® System. Data is deemed reliable but is not guaranteed accurate by Pillar 9â„¢. The trademarks MLS®, Multiple Listing Service® and the associated logos are owned by The Canadian Real Estate Association (CREA) and identify the quality of services provided by real estate professionals who are members of CREA. Used under license.