

\$275,000 - 5213 50 Street, Bentley

MLS® #A2248078

\$275,000

3 Bedroom, 2.00 Bathroom, 1,021 sqft
Residential on 0.15 Acres

NONE, Bentley, Alberta

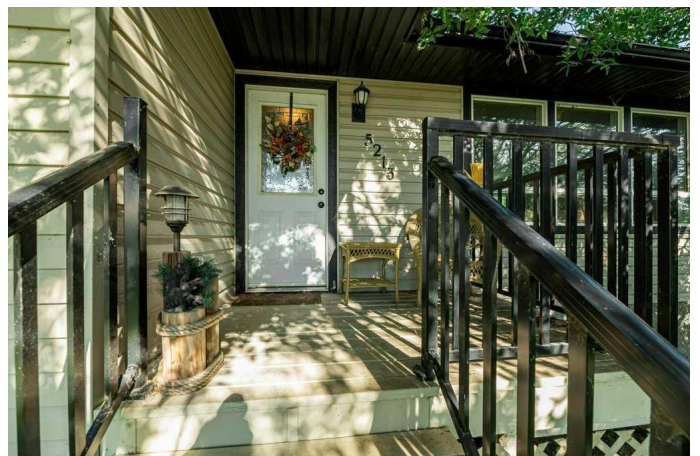
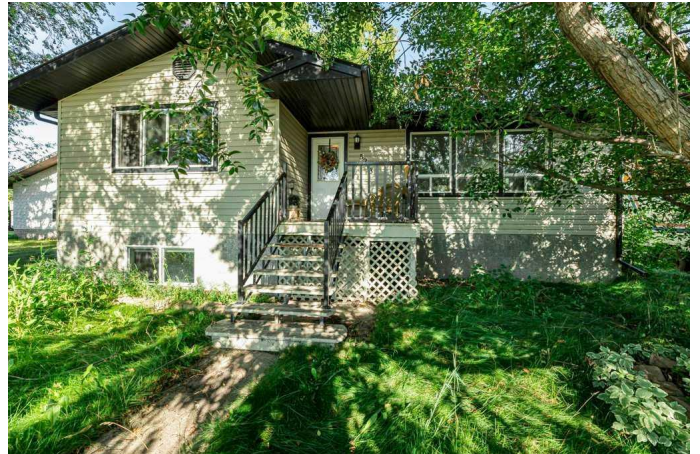
Affordable Home with a Detached Double Garage! Additional parking space on a gravel parking pad. The simple and cozy layout includes a bright living room & open concept. 2 Bedrooms up and one down with a huge family room. Located just 2 minutes from Gull Lake and nestled in a quiet, friendly community, this home is ideal for nature lovers and families alike. Walk to nearby parks and schools, or hop on the trail that leads straight to the lake. Youâ€™re also just a short drive to Sylvan Lake, Red Deer, and Lacombe making commuting a breeze

Built in 1975

Essential Information

MLS® #	A2248078
Price	\$275,000
Bedrooms	3
Bathrooms	2.00
Full Baths	2
Square Footage	1,021
Acres	0.15
Year Built	1975
Type	Residential
Sub-Type	Detached
Style	Bungalow
Status	Active

Community Information



Address	5213 50 Street
Subdivision	NONE
City	Bentley
County	Lacombe County
Province	Alberta
Postal Code	T0C0J0

Amenities

Parking Spaces	4
Parking	Additional Parking, Double Garage Detached, Unpaved
# of Garages	2

Interior

Interior Features	Open Floorplan
Appliances	None
Heating	Forced Air, Natural Gas
Cooling	None
Has Basement	Yes
Basement	Full, Partially Finished

Exterior

Exterior Features	None
Lot Description	Back Lane, Back Yard, Front Yard
Roof	Asphalt Shingle
Construction	Vinyl Siding
Foundation	See Remarks

Additional Information

Date Listed	August 13th, 2025
Days on Market	1
Zoning	R1

Listing Details

Listing Office	Century 21 Maximum
----------------	--------------------

Data is supplied by Pillar 9â„¢ MLS® System. Pillar 9â„¢ is the owner of the copyright in its MLS® System. Data is deemed reliable but is not guaranteed accurate by Pillar 9â„¢. The trademarks MLS®, Multiple Listing Service® and the associated logos are owned by The Canadian Real Estate Association (CREA) and identify the quality of services provided by real estate professionals who are members of CREA. Used under license.