

\$605,000 - 65 Emily Crescent, Lacombe

MLS® #A2246774

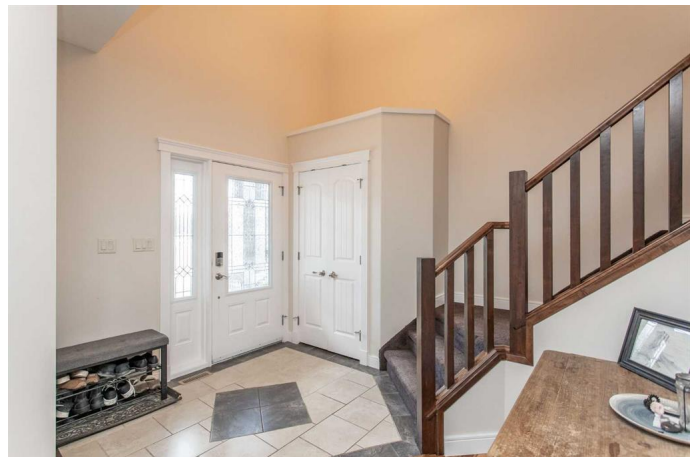
\$605,000

5 Bedroom, 4.00 Bathroom, 2,172 sqft

Residential on 0.14 Acres

Elizabeth Park, Lacombe, Alberta

A lovely two storey fully finished home in Elizabeth Park awaits its new family! This custom built home has an amazing floorplan! Open the front door step into the spacious tiled entry and into the main living spaces of the home featuring the perfect space for hosting family and friends. An abundance of cabinetry, countertops and a walk in pantry make this space a showpiece in the home - open concept to the living room and dining areas - gas burning fireplace and lots of windows allowing natural light to shine in. Upstairs to the second storey featuring four bedrooms including the primary bedroom which is oversized with garden doors leading out to its own private deck - enjoy your morning coffee overlooking your beautifully landscaped back yard and garden. The four piece ensuite is a beautiful oasis and includes an oval soaker tub - the perfect spot to relax after a long day at work. The walk in closet is very spacious with lots of room for the shopaholic plus an extra closet for linens! The basement is fully finished with one more bedroom, family room and four piece bathroom. The yard is fully fenced, landscaped and side paved alley access. Central air conditioning, covered deck, hardwood flooring, infloor heat in kitchen, garage and basement. Lots of room for the entire family and situated in the desirable Elizabeth Park - close to walking trails, schools and greenspaces.



Built in 2009

Essential Information

MLS® #	A2246774
Price	\$605,000
Bedrooms	5
Bathrooms	4.00
Full Baths	3
Half Baths	1
Square Footage	2,172
Acres	0.14
Year Built	2009
Type	Residential
Sub-Type	Detached
Style	2 Storey
Status	Active

Community Information

Address	65 Emily Crescent
Subdivision	Elizabeth Park
City	Lacombe
County	Lacombe
Province	Alberta
Postal Code	T4L 0C8

Amenities

Parking Spaces	4
Parking	Double Garage Attached
# of Garages	2

Interior

Interior Features	High Ceilings, Kitchen Island, Laminate Counters, Open Floorplan, Pantry, Soaking Tub, Vaulted Ceiling(s), Vinyl Windows, Walk-In Closet(s)
Appliances	Dishwasher, Garage Control(s), Microwave, Refrigerator, Stove(s), Washer/Dryer
Heating	In Floor, Fireplace(s), Forced Air
Cooling	Central Air
Fireplace	Yes

# of Fireplaces	1
Fireplaces	Gas
Has Basement	Yes
Basement	Finished, Full

Exterior

Exterior Features	None
Lot Description	Back Yard, City Lot, Garden, Landscaped, Lawn, Level, Street Lighting
Roof	Asphalt Shingle
Construction	Vinyl Siding
Foundation	Poured Concrete

Additional Information

Date Listed	August 8th, 2025
Days on Market	1
Zoning	R1

Listing Details

Listing Office	RE/MAX real estate central alberta
----------------	------------------------------------

Data is supplied by Pillar 9â„¢ MLS® System. Pillar 9â„¢ is the owner of the copyright in its MLS® System. Data is deemed reliable but is not guaranteed accurate by Pillar 9â„¢. The trademarks MLS®, Multiple Listing Service® and the associated logos are owned by The Canadian Real Estate Association (CREA) and identify the quality of services provided by real estate professionals who are members of CREA. Used under license.