

# \$1,450 - 203, 10101 101 Avenue, Grande Prairie

MLS® #A2246419

**\$1,450**

1 Bedroom, 1.00 Bathroom, 568 sqft

Rental on 0.00 Acres

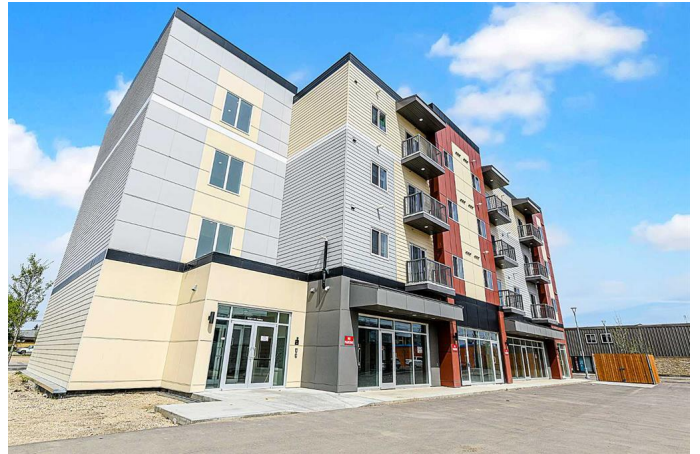
Central Business District., Grande Prairie, Alberta

1 bed 1 bath unit in Toremide Towers!  
In the heart of downtown and in close proximity to all amenities. The building has an elevator and is sound proofed. Spacious entry way with closet. Open kitchen with 5 stainless appliances and lots of cabinet and countertop space. Large living room with access to attached balcony. Spacious bedroom with plenty of storage space. In suite laundry and no baseboard heaters to take up floor space. Rent includes water. Powered parking stalls available at \$75/mo.

Cat Friendly with approval and a \$50/mo pet fee.

Application required prior to viewing.

Pictures and 3D of a similar unit.



## Essential Information

MLS® #	A2246419
Price	\$1,450
Bedrooms	1
Bathrooms	1.00
Full Baths	1
Square Footage	568
Acres	0.00
Type	Rental
Status	Active

## Community Information

Address	203, 10101 101 Avenue
Subdivision	Central Business District.
City	Grande Prairie
County	Grande Prairie
Province	Alberta
Postal Code	T8V0Y4

### **Amenities**

Parking	Stall
---------	-------

### **Interior**

Appliances	Dishwasher, Microwave Hood Fan, Oven, Refrigerator, Stove(s), Washer/Dryer
------------	--

### **Exterior**

Roof	Asphalt Shingle
------	-----------------

### **Additional Information**

Date Listed	August 6th, 2025
-------------	------------------

Days on Market	2
----------------	---

### **Listing Details**

Listing Office	Grassroots Realty Group Ltd.
----------------	------------------------------

Data is supplied by Pillar 9â„¢ MLS® System. Pillar 9â„¢ is the owner of the copyright in its MLS® System. Data is deemed reliable but is not guaranteed accurate by Pillar 9â„¢. The trademarks MLS®, Multiple Listing Service® and the associated logos are owned by The Canadian Real Estate Association (CREA) and identify the quality of services provided by real estate professionals who are members of CREA. Used under license.