

# \$195,000 - 15 Marina Place, Rural Stettler No. 6, County of

MLS® #A2246172

**\$195,000**

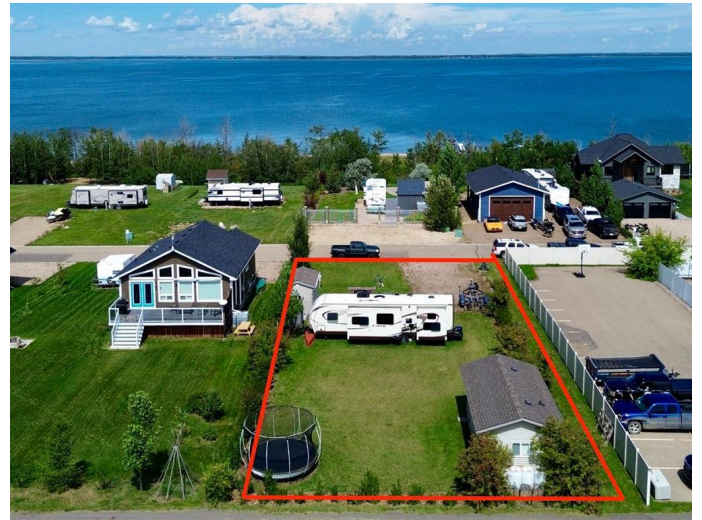
0 Bedroom, 0.00 Bathroom,  
Land on 0.21 Acres

Rochon Sands Heights, Rural Stettler No. 6,  
County of, Alberta

Prime lot on a paved cul-de-sac just steps from Buffalo Lake, available with a MARINA SLIP (sold separately).

The lot is set up and ready to go for recreational enjoyment or future building site and there is no time limit to build.

Fully equipped with 3 x 30-amp RV hookups, each with municipal water and sewer connections, ideal for hosting family and friends. A 12' x 26' heated, insulated and drywalled garage/bunkhouse with 9' ceiling, 240V power, and a 3-piece bathroom. The 10' x 8' overhead garage door is sized to accommodate a 23ft surf boat. Additional value added with an 8' x 14' powered shed for additional storage. A fence borders the east side, and remaining perimeter is naturally sheltered with trees for added privacy. This property is ready to enjoy as a weekend getaway or build your dream lake home. Don't miss out on this rare opportunity near the water!



## Essential Information

MLS® #	A2246172
Price	\$195,000
Bathrooms	0.00
Acres	0.21

Type	Land
Sub-Type	Residential Land
Status	Active

### **Community Information**

Address	15 Marina Place
Subdivision	Rochon Sands Heights
City	Rural Stettler No. 6, County of
County	Stettler No. 6, County of
Province	Alberta
Postal Code	T0C 3B0

### **Additional Information**

Date Listed	August 6th, 2025
Days on Market	19
Zoning	RR-CS

### **Listing Details**

Listing Office	RE/MAX real estate central alberta
----------------	------------------------------------

Data is supplied by Pillar 9â„¢ MLSÂ® System. Pillar 9â„¢ is the owner of the copyright in its MLSÂ® System. Data is deemed reliable but is not guaranteed accurate by Pillar 9â„¢. The trademarks MLSÂ®, Multiple Listing ServiceÂ® and the associated logos are owned by The Canadian Real Estate Association (CREA) and identify the quality of services provided by real estate professionals who are members of CREA. Used under license.