

\$549,900 - 2 Prichard Close, Sylvan Lake

MLS® #A2245793

\$549,900

5 Bedroom, 4.00 Bathroom, 1,784 sqft

Residential on 0.13 Acres

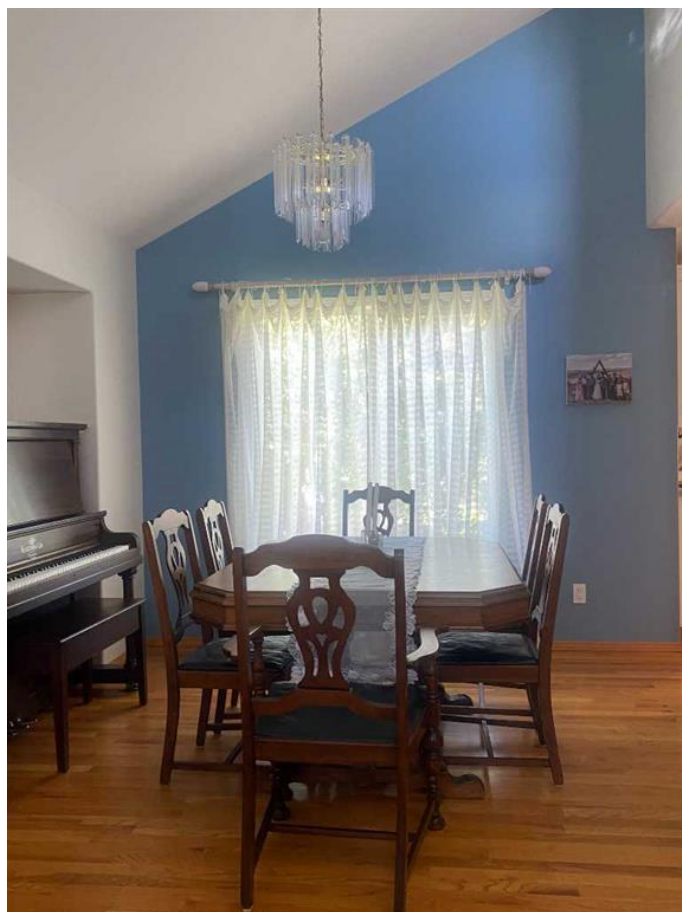
Pierview, Sylvan Lake, Alberta

5-Bedroom Home in Pierview Estates. This 2-storey, 5-bedroom residence offers spacious comfort and an abundance of natural light. Step into a beautiful living room and dining area, both adorned with hardwood floors. The cozy family room features a gas fireplace. Upstairs, you'll find 3 spacious bedrooms, including a primary suite with a private ensuite, plus a guest bathroom. The main floor includes a convenient ½ bath for guests. The fully finished basement boasts a living room, 2 additional bedrooms, and a 3-piece bathroom, ideal for guests or extended family. It also includes central vac, AC, water softener, double car garage and is steps away from one of Sylvan Lake's beautiful bike paths. Outside, enjoy mature landscaping in a serene, private yard. Located just minutes from schools, the lake and beaches, and shopping, not to mention the convenience of easy access to the city of Red Deer. This home is located in a peaceful and quiet cul de sac in Pierview Estates!

Built in 1998

Essential Information

MLS® #	A2245793
Price	\$549,900
Bedrooms	5
Bathrooms	4.00
Full Baths	3



Half Baths	1
Square Footage	1,784
Acres	0.13
Year Built	1998
Type	Residential
Sub-Type	Detached
Style	2 Storey
Status	Active

Community Information

Address	2 Prichard Close
Subdivision	Pierview
City	Sylvan Lake
County	Red Deer County
Province	Alberta
Postal Code	T4S1W3

Amenities

Parking Spaces	2
Parking	Double Garage Attached
# of Garages	2

Interior

Interior Features	Central Vacuum, Laminate Counters, No Animal Home, No Smoking Home
Appliances	Central Air Conditioner, Dishwasher, Dryer, Microwave, Refrigerator, Stove(s), Washer
Heating	In Floor, Forced Air
Cooling	Central Air
Fireplace	Yes
# of Fireplaces	1
Fireplaces	Gas
Has Basement	Yes
Basement	Finished, Full

Exterior

Exterior Features	Private Yard, Storage
Lot Description	Treed
Roof	Asphalt Shingle

Construction	Wood Frame
Foundation	Poured Concrete

Additional Information

Date Listed	August 4th, 2025
Days on Market	1
Zoning	R1

Listing Details

Listing Office	ComFree
----------------	---------



Data is supplied by Pillar 9â„¢ MLS® System. Pillar 9â„¢ is the owner of the copyright in its MLS® System. Data is deemed reliable but is not guaranteed accurate by Pillar 9â„¢. The trademarks MLS®, Multiple Listing Service® and the associated logos are owned by The Canadian Real Estate Association (CREA) and identify the quality of services provided by real estate professionals who are members of CREA. Used under license.