

\$215,000 - 3, 29 Meadowlark Boulevard N, Lethbridge

MLS® #A2244161

\$215,000

2 Bedroom, 2.00 Bathroom, 460 sqft

Residential on 0.00 Acres

Park Meadows, Lethbridge, Alberta

Check out this nicely renovated condo on Meadowlark Blvd. Upstairs is open concept, with a living dining area, and a convenient galley kitchen. There is also a pantry area, and a 1/2 bath on the main floor. Downstairs you will find the laundry, a full bath, and the two bedrooms. There is plenty of street parking, but this unit comes with off street parking as well. View the virtual tour, or better yet, call your favorite REALTOR® to take a look.

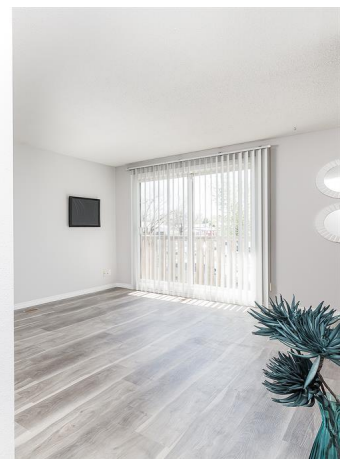
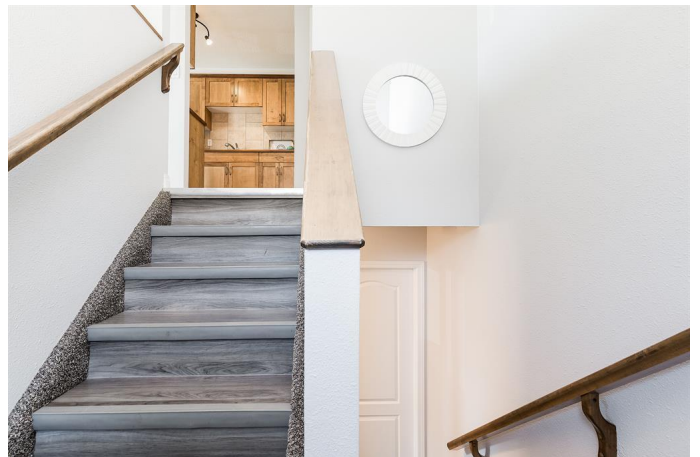
Built in 1976

Essential Information

MLS® #	A2244161
Price	\$215,000
Bedrooms	2
Bathrooms	2.00
Full Baths	1
Half Baths	1
Square Footage	460
Acres	0.00
Year Built	1976
Type	Residential
Sub-Type	Row/Townhouse
Style	Bi-Level
Status	Active

Community Information

Address 3, 29 Meadowlark Boulevard N



Subdivision	Park Meadows
City	Lethbridge
County	Lethbridge
Province	Alberta
Postal Code	T1H 4R4

Amenities

Amenities	None
Parking Spaces	2
Parking	Off Street

Interior

Interior Features	Ceiling Fan(s), Storage
Appliances	Dishwasher, Refrigerator, See Remarks, Stove(s), Washer/Dryer
Heating	Forced Air, Natural Gas
Cooling	None
Has Basement	Yes
Basement	Finished, Full

Exterior

Exterior Features	Private Entrance
Lot Description	Landscaped
Roof	Asphalt Shingle
Construction	Aluminum Siding, Brick, Metal Siding
Foundation	Poured Concrete

Additional Information

Date Listed	August 8th, 2025
Zoning	R-50

Listing Details

Listing Office	Lethbridge Real Estate.com
----------------	----------------------------

Data is supplied by Pillar 9â„¢ MLS® System. Pillar 9â„¢ is the owner of the copyright in its MLS® System. Data is deemed reliable but is not guaranteed accurate by Pillar 9â„¢. The trademarks MLS®, Multiple Listing Service® and the associated logos are owned by The Canadian Real Estate Association (CREA) and identify the quality of services provided by real estate professionals who are members of CREA. Used under license.