

# \$598,000 - 218 Edith Road Nw, Calgary

MLS® #A2242156

**\$598,000**

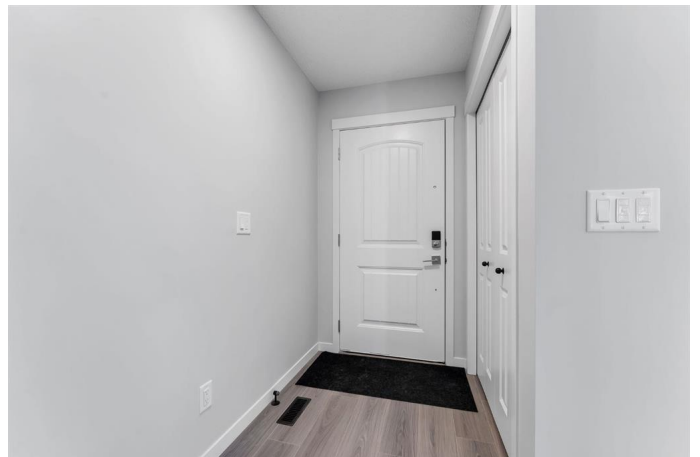
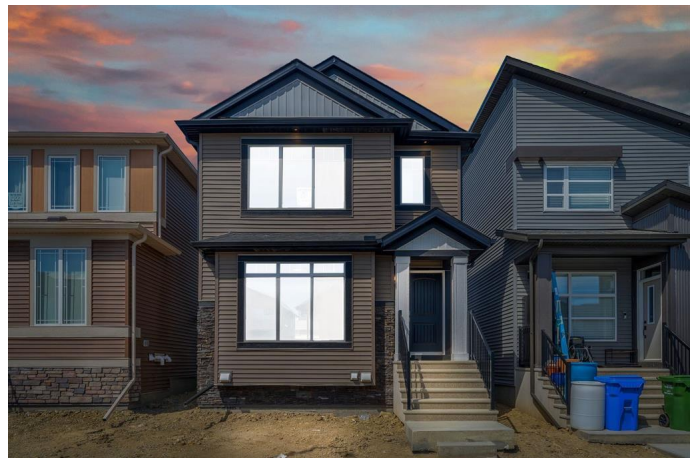
3 Bedroom, 3.00 Bathroom, 1,427 sqft

Residential on 0.06 Acres

Glacier Ridge, Calgary, Alberta

Cheapest Home in Glacier Ridge Right Now  
and It's Absolutely Loaded with  
Upgrades!

Welcome to the most affordable home currently available in Glacier Ridge, NW Calgary and it's not just about the price. This stunning 2024-built gem offers an unbeatable combination of modern elegance, luxury upgrades, and functional design that truly sets it apart. Featuring 3 spacious bedrooms and 2.5 beautifully finished bathrooms, this home has been thoughtfully crafted for comfort and style. From the moment you arrive, the striking curb appeal draws you in. Step inside and you're greeted by an unusually wide and expansive living area – a rare find that offers incredible space for both entertaining and everyday living. The designated dining space flows seamlessly into the show-stopping gourmet kitchen, where glossy upgraded cabinetry with gold handles, sleek quartz countertops, and a designer backsplash create a sophisticated vibe. The chimney-style hood fan, built-in microwave, and double-door refrigerator add both style and convenience. The peninsula adds extra seating and prep space, and yes – even the soap dispenser has been upgraded for that extra touch of functionality. Upstairs, the master bedroom is your private retreat with a luxurious standing shower ensuite, while the other bathrooms are equally refined with high-end finishes. The laundry area stands out with designer tiles and



extra built-in storage for maximum efficiency. Built with year-round comfort in mind, the home features energy-efficient double-pane windows. And for those looking to customize or expand, the unfinished basement offers a separate side entrance, great ceiling height, and rough-in plumbing waiting for your creative ideas in future. A gravel parking pad at the back adds even more value. This is more than just the lowest-priced home in Glacier Ridge â€” itâ€™s a rare opportunity to own a stylish, functional, and future-ready home at an unbeatable price. Donâ€™t wait â€” reach out now to book your private tour before itâ€™s gone!

Built in 2024

Essential Information

MLS® #	A2242156
Price	\$598,000
Bedrooms	3
Bathrooms	3.00
Full Baths	2
Half Baths	1
Square Footage	1,427
Acres	0.06
Year Built	2024
Type	Residential
Sub-Type	Detached
Style	2 Storey
Status	Active

Community Information

Address	218 Edith Road Nw
Subdivision	Glacier Ridge
City	Calgary
County	Calgary
Province	Alberta
Postal Code	T3R2C7

## Amenities

Amenities	None
Parking Spaces	2
Parking	Alley Access, Off Street, On Street, Parking Pad

## Interior

Interior Features	Breakfast Bar, High Ceilings, No Animal Home, No Smoking Home, Open Floorplan, Pantry, Quartz Counters, Separate Entrance, Vinyl Windows, Walk-In Closet(s)
Appliances	Dishwasher, Electric Stove, Microwave, Refrigerator, Washer/Dryer
Heating	Forced Air
Cooling	None
Has Basement	Yes
Basement	Exterior Entry, Full, Unfinished

## Exterior

Exterior Features	None
Lot Description	Back Lane
Roof	Asphalt Shingle
Construction	Vinyl Siding
Foundation	Poured Concrete

## Additional Information

Date Listed	July 22nd, 2025
Days on Market	3
Zoning	R-G
HOA Fees	420
HOA Fees Freq.	ANN

## Listing Details

Listing Office	RE/MAX First
----------------	--------------

Data is supplied by Pillar 9â„¢ MLSÂ® System. Pillar 9â„¢ is the owner of the copyright in its MLSÂ® System. Data is deemed reliable but is not guaranteed accurate by Pillar 9â„¢. The trademarks MLSÂ®, Multiple Listing ServiceÂ® and the associated logos are owned by The Canadian Real Estate Association (CREA) and identify the quality of services provided by real estate professionals who are members of CREA. Used under license.