

# **\$829,900 - 10118 Covington Way, Rural Grande Prairie No. 1, County of**

---

MLS® #A2241956

**\$829,900**

4 Bedroom, 4.00 Bathroom, 2,158 sqft  
Residential on 0.53 Acres

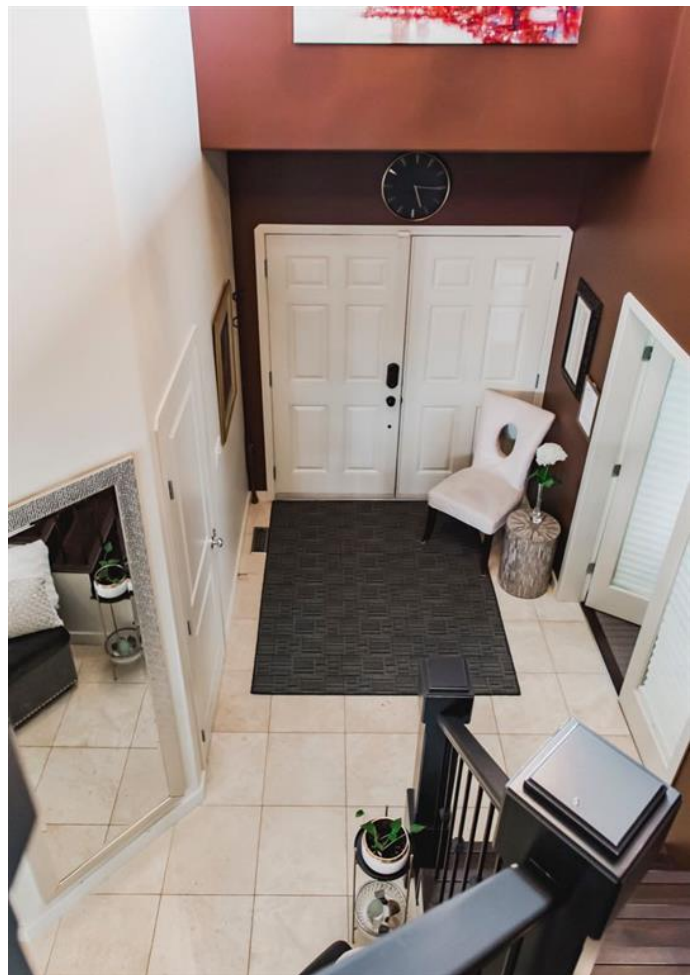
Carriage Lane Estates, Rural Grande Prairie  
No. 1, County of, Alberta

Immaculate Family Home in Carriage Lane Estates! Welcome to your dream home in one of the most sought-after neighborhoods!

Featuring 4 spacious bedrooms, a dedicated main floor office, and 3.5 bathrooms, A/C, heated garage, this home is ideal for families looking for comfort, functionality, and space to grow.

Step inside to discover a chef's dream kitchen—complete with a gas double oven, a pull-out pantry, large island, and ample counter space—perfect for cooking and entertaining. The open layout flows seamlessly to the dining area and living room, making it the heart of the home. Upstairs, the primary suite impresses with floor-to-ceiling windows, a generous walk-in closet, and a spa-like ensuite featuring a jet tub and oversized shower. The fully finished basement includes a bedroom, bathroom, cozy gas fireplace, wet bar, and plenty of room for relaxing or entertaining guests. Car lovers and hobbyists will appreciate the huge heated triple car garage, complete with floor drain, 240 volt welding plug and 200 amp service at the panel for EV charging and a rear overhead door providing easy access to the backyard. There's tons of parking, including RV parking with sewer and power hook up, making it perfect for storing all your toys.

Outside, enjoy a fully landscaped, private, and



treed yard, with a large reinforced deck ready for a future hot tub. Other updates include a new hot water tank, ensuring peace of mind. This home truly has it all—location, space, luxury, and versatility. Don't miss your opportunity to own this exceptional property in one of the area's most desirable neighbourhoods. Come take a look today!

Built in 2008

**Essential Information**

MLS® #	A2241956
Price	\$829,900
Bedrooms	4
Bathrooms	4.00
Full Baths	3
Half Baths	1
Square Footage	2,158
Acres	0.53
Year Built	2008
Type	Residential
Sub-Type	Detached
Style	2 Storey, Acreage with Residence
Status	Active

**Community Information**

Address	10118 Covington Way
Subdivision	Carriage Lane Estates
City	Rural Grande Prairie No. 1, County of
County	Grande Prairie No. 1, County of
Province	Alberta
Postal Code	T8X 0G4

**Amenities**

Parking	Triple Garage Attached
# of Garages	4

**Interior**

Interior Features	Kitchen Island, Sump Pump(
	Double Vanity, Wired for Sou
Appliances	Dishwasher, Microwave, Refr
Heating	Forced Air
Cooling	Central Air
Fireplace	Yes
# of Fireplaces	2
Fireplaces	Gas
Has Basement	Yes
Basement	Finished, Full

## Exterior

Exterior Features	BBQ gas line, Private Yard
Lot Description	Back Yard, Front Yard, Lands
Roof	Asphalt Shingle
Construction	Vinyl Siding
Foundation	Poured Concrete

## Additional Information

Date Listed	July 21st, 2025
Days on Market	8
Zoning	RE

## Listing Details

Listing Office	Century 21 Grande Prairie Realty Inc.
----------------	---------------------------------------

Data is supplied by Pillar 9â„¢ MLSÂ® System. Pillar 9â„¢ is the owner of the copyright in its MLSÂ® System. Data is deemed reliable but is not guaranteed accurate by Pillar 9â„¢. The trademarks MLSÂ®, Multiple Listing ServiceÂ® and the associated logos are owned by The Canadian Real Estate Association (CREA) and identify the quality of services provided by real estate professionals who are members of CREA. Used under license.

