

\$539,900 - 23 Aspen Creek Way, Strathmore

MLS® #A2240330

\$539,900

4 Bedroom, 3.00 Bathroom, 1,929 sqft
Residential on 0.15 Acres

Aspen Creek, Strathmore, Alberta

Check out this 4 bedroom, 2 1/2 bathroom, fully developed home. Featuring a large lot with mature trees and a storage shed. large kitchen with plenty of cupboard space, gas stove and gas BBQ hookup on deck. Cherry wood finishes and gas fireplace in family room with built in shelving feature wall. Double attached garage. Close to downtown, walking paths, shopping and schools. Quick possession.

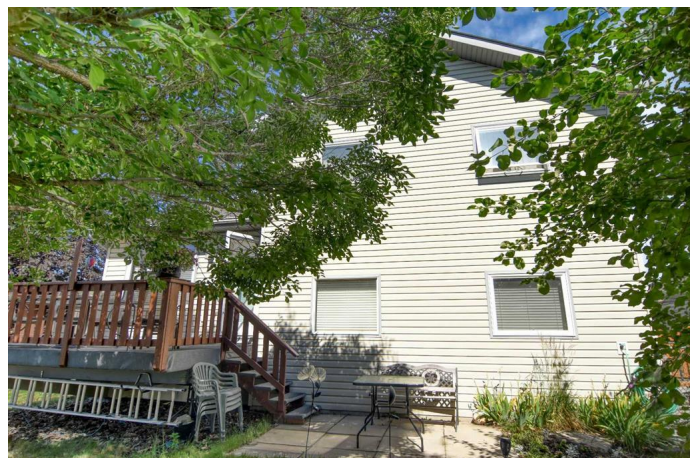
Built in 1999

Essential Information

MLS® #	A2240330
Price	\$539,900
Bedrooms	4
Bathrooms	3.00
Full Baths	2
Half Baths	1
Square Footage	1,929
Acres	0.15
Year Built	1999
Type	Residential
Sub-Type	Detached
Style	4 Level Split
Status	Active

Community Information

Address 23 Aspen Creek Way



Subdivision	Aspen Creek
City	Strathmore
County	Wheatland County
Province	Alberta
Postal Code	T1P 1K2

Amenities

Parking Spaces	4
Parking	Double Garage Attached
# of Garages	2

Interior

Interior Features	Bookcases, Built-in Features, Ceiling Fan(s)
Appliances	Dishwasher, Garage Control(s), Gas Stove, Range Hood, Refrigerator, Washer/Dryer, Window Coverings
Heating	Forced Air
Cooling	None
Fireplace	Yes
# of Fireplaces	1
Fireplaces	Family Room, Gas, Mantle, Other
Has Basement	Yes
Basement	Finished, Full

Exterior

Exterior Features	Storage
Lot Description	Front Yard, Fruit Trees/Shrub(s), Irregular Lot, See Remarks
Roof	Asphalt Shingle
Construction	Vinyl Siding, Wood Frame
Foundation	Poured Concrete

Additional Information

Date Listed	July 17th, 2025
Days on Market	75
Zoning	R1

Listing Details

Listing Office	KIC Realty
----------------	------------

Data is supplied by Pillar 9â„¢ MLSÂ® System. Pillar 9â„¢ is the owner of the copyright in its MLSÂ® System. Data is deemed reliable but is not guaranteed accurate by Pillar 9â„¢. The trademarks MLSÂ®, Multiple Listing ServiceÂ® and the associated logos are owned by The Canadian Real Estate Association (CREA) and identify the quality of services

provided by real estate professionals who are members of CREA. Used under license.