

\$2,599,900 - 129 Glyde Park, Rural Rocky View County

MLS® #A2238219

\$2,599,900

6 Bedroom, 5.00 Bathroom, 4,350 sqft

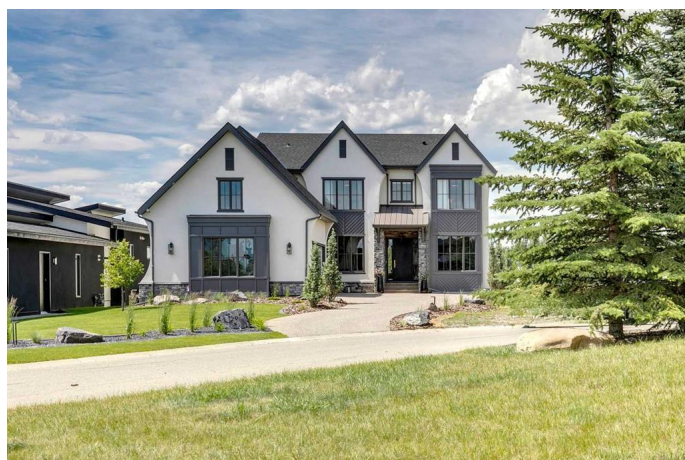
Residential on 0.28 Acres

Elbow Valley West, Rural Rocky View County,
Alberta

Welcome to this exceptional custom-built home by BILD Award Winner, URBAN INDIGO FINE HOMES. This one-of-a-kind residence offers over 6,200 sq ft of beautifully designed living space, created for those who appreciate quality, elegance, and comfort.

Thoughtful craftsmanship and luxurious details shine throughout the home. The main floor boasts soaring 10'™ ceilings and a grand, open layout perfect for both daily living and entertaining. A formal dining room sets the tone for memorable dinners, while a private office provides a quiet retreat for work or study. At the heart of the home, the chef-inspired kitchen impresses with dual islands, high-end appliances, beautiful built-ins, and a butler's™ pantry that connects to a practical command center—ideal for organizing busy family life. Upstairs, you'll™ find a show stopping primary suite featuring vaulted ceilings, a luxurious 5-piece ensuite, and a generous walk-in closet with a smart pass-through to the laundry room. You'll also love the spacious bonus room along with 3 additional bedrooms, great for a family of 4 or more.

The fully finished lower level offers even more space to unwind, with a large family room, wet bar with wine cellar, two additional bedrooms and a home gym. The oversized, heated, triple garage includes nearly 12'™ ceilings, a dedicated workshop area, and enough room to accommodate a car lift.



Outside, enjoy over \$150,000 in professional landscaping, complete with a stone fireplace, expansive stone patio, irrigation system, putting green and a spacious 450 sq ft west-facing deck. This home offers the perfect place to unwind and enjoy panoramic mountain views, all while backing onto lush green space with a playground, tennis courts, a pond that transforms into a skating rink, and beautiful garden and picnic areas. Additional upgrades include central air conditioning, a comprehensive security system with cameras, and a premium \$85,000 blinds package, featuring remote-controlled window coverings in key areas. This home is more than just a place to live—it's a lifestyle. With timeless design, modern features, and breathtaking surroundings, it is truly a must see! Book your private showing today.

Built in 2024

Essential Information

MLS® #	A2238219
Price	\$2,599,900
Bedrooms	6
Bathrooms	5.00
Full Baths	4
Half Baths	1
Square Footage	4,350
Acres	0.28
Year Built	2024
Type	Residential
Sub-Type	Detached
Style	2 Storey, Acreage with Residence
Status	Active

Community Information

Address	129 Glyde Park
Subdivision	Elbow Valley West

City	Rural Rocky View County
County	Rocky View County
Province	Alberta
Postal Code	T3Z 0A1

Amenities

Amenities	Park, Other, Picnic Area, Recreation Facilities
Parking Spaces	5
Parking	Concrete Driveway, Heated Garage, Oversized, Triple Garage Attached, Workshop in Garage
# of Garages	3

Interior

Interior Features	Bookcases, Built-in Features, Central Vacuum, Closet Organizers, Double Vanity, High Ceilings, Kitchen Island, Open Floorplan, Recessed Lighting, Soaking Tub, Sump Pump(s), Vaulted Ceiling(s), Walk-In Closet(s), Wet Bar, French Door
Appliances	Dishwasher, Freezer, Gas Range, Humidifier, Microwave, Refrigerator, Washer/Dryer, Window Coverings, Wine Refrigerator
Heating	Forced Air, Natural Gas
Cooling	Central Air
Fireplace	Yes
# of Fireplaces	2
Fireplaces	Gas, Living Room, Outside
Has Basement	Yes
Basement	Finished, Full

Exterior

Exterior Features	BBQ gas line, Lighting, Other, Private Yard
Lot Description	Backs on to Park/Green Space, Cul-De-Sac, Front Yard, Garden, Landscaped, No Neighbours Behind, See Remarks, Underground Sprinklers
Roof	Asphalt Shingle
Construction	Concrete, Stone, Stucco, Wood Frame
Foundation	Poured Concrete

Additional Information

Date Listed	July 10th, 2025
Days on Market	8
Zoning	DC

Listing Details

Listing Office eXp Realty

Data is supplied by Pillar 9â„¢ MLSÂ® System. Pillar 9â„¢ is the owner of the copyright in its MLSÂ® System. Data is deemed reliable but is not guaranteed accurate by Pillar 9â„¢. The trademarks MLSÂ®, Multiple Listing ServiceÂ® and the associated logos are owned by The Canadian Real Estate Association (CREA) and identify the quality of services provided by real estate professionals who are members of CREA. Used under license.