

# \$609,900 - 252 Cambridge Crescent, Strathmore

MLS® #A2237973

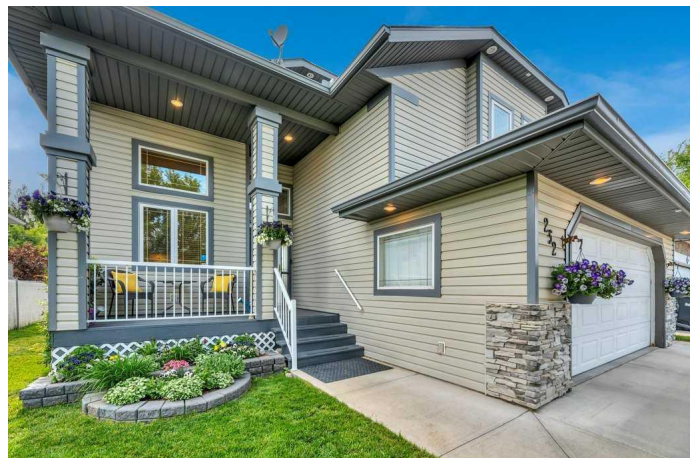
**\$609,900**

4 Bedroom, 3.00 Bathroom, 1,499 sqft

Residential on 0.12 Acres

Cambridge Glen, Strathmore, Alberta

Discover this well maintained modified bi-level home in Cambridge Glen backing dinosaur hill park- the best sledding in town! Built by one of Strathmore's favorite builders Abe Fehr this solid home offers a blend of practicality and charm for families, professionals, or multi-generational households. The spacious foyer opens to a den/home office bathed in natural light and accesses the entrance to the attached insulated double car 21'x21' garage. Then up a few stairs take in the hardwood floors that flow through the living and dining spaces and feature a gas fireplace and access to the rear deck/yard, setting the stage for effortless entertaining and daily life. The eat-in kitchen boasts solid wood cabinetry, expansive durable counter space, and a functional islandâ€”perfect for casual meals or culinary explorationâ€”while a convenient corner pantry is available to store all your extras. A full bathroom completes the main floor. Upstairs, two generous bedrooms offering comfort for children or guests. Downstairs, the fully developed lower level offers versatility with a large family room centered around a gas freestanding stove, a kitchenette with mini fridge and microwave for easy access snacks and drinks, a 4th good-sized bedroom, a 3rd full bathroom with make-up desk and a utility room with laundry area and storage. Outside, enjoy peace of mind with no neighbors at the rear in the fully fenced backyard with gazebo, storage shed and mature landscaping ideal for summer or winter gatherings and relaxing



evenings. Experience the popular Cambridge Glen lifestyle: centrally located to all amenities, moments from parks, playgrounds, and walking/biking paths. Families appreciate proximity to Brentwood Elementary school, Wheatland Elementary School, Crowther Memorial Junior High, Strathmore High School, and town recreation facilities—including arena, sports fields, and public pool. Plus Strathmore offers Alberta’s scenic Bow River 20 minutes south for weekend escapes, while Calgary is just a short, stress-free commute via Highway 1, Glenmore Trail, Hwy 564, or Hwy 22X. Book your showing with your favorite realtor today!

Built in 2000

**Essential Information**

MLS® #	A2237973
Price	\$609,900
Bedrooms	4
Bathrooms	3.00
Full Baths	3
Square Footage	1,499
Acres	0.12
Year Built	2000
Type	Residential
Sub-Type	Detached
Style	Bi-Level
Status	Active

**Community Information**

Address	252 Cambridge Crescent
Subdivision	Cambridge Glen
City	Strathmore
County	Wheatland County
Province	Alberta
Postal Code	T1P 1S1

**Amenities**

Parking Spaces	4
Parking	Double Garage Attached, Front Drive, Garage Door Opener, Garage Faces Front, Insulated
# of Garages	2

## Interior

Interior Features	Kitchen Island, Open Floorplan, Pantry, Soaking Tub, Wet Bar
Appliances	Bar Fridge, Dishwasher, Electric Stove, Garage Control(s), Microwave Hood Fan, Refrigerator, Water Softener, Window Coverings
Heating	Forced Air, Natural Gas
Cooling	Central Air
Fireplace	Yes
# of Fireplaces	2
Fireplaces	Gas, Free Standing, Insert
Has Basement	Yes
Basement	Finished, Full

## Exterior

Exterior Features	Private Yard
Lot Description	Back Yard, Backs on to Park/Green Space, Front Yard, Lawn
Roof	Asphalt Shingle
Construction	Vinyl Siding, Wood Frame
Foundation	Poured Concrete

## Additional Information

Date Listed	July 8th, 2025
Days on Market	10
Zoning	R1

## Listing Details

Listing Office	RE/MAX Key
----------------	------------

Data is supplied by Pillar 9â„¢ MLS® System. Pillar 9â„¢ is the owner of the copyright in its MLS® System. Data is deemed reliable but is not guaranteed accurate by Pillar 9â„¢. The trademarks MLS®, Multiple Listing Service® and the associated logos are owned by The Canadian Real Estate Association (CREA) and identify the quality of services provided by real estate professionals who are members of CREA. Used under license.