

\$189,000 - 32529 Range Road 52, Rural Mountain View County

MLS® #A2236486

\$189,000

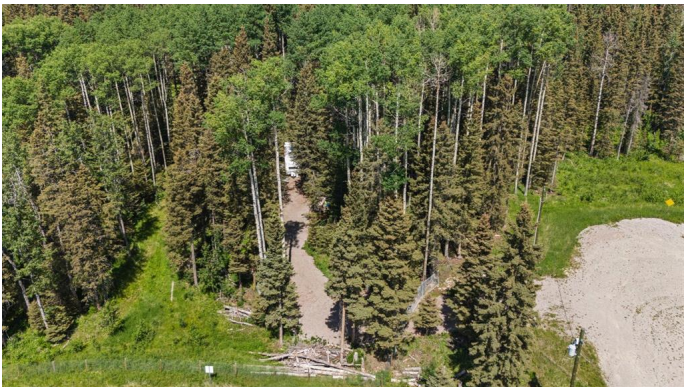
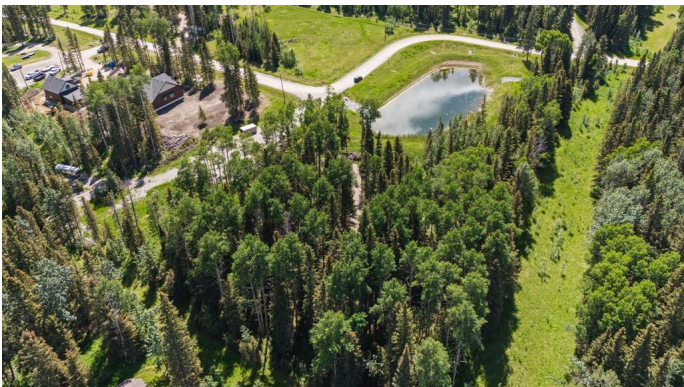
0 Bedroom, 0.00 Bathroom,
Land on 1.00 Acres

NONE, Rural Mountain View County, Alberta

Tucked away just minutes from Sundre in a private gated community, this stunning 1-acre treed parcel offers the ultimate blend of seclusion, security, and serenity. Towering evergreens and mature aspens provide a natural canopy, giving this property a true forested feel – perfect for anyone seeking a peaceful escape or weekend retreat.

The lot is serviced with 200amp power, and thoughtfully improved with a gravel driveway, outdoor entertaining deck, and custom gazebo. A beautifully built-out RV setup (RV negotiable) features an expansive wooden deck with designated seating and dining areas, BBQ space, and even a built-in firepit lounge – all nestled under the trees. There’s also a shed/watercloset for extra, and ample parking for guests.

Backing onto green space and steps from a community pond, this lot is located in a well-maintained, quiet cul-de-sac – offering a secure, community-driven environment that still feels like your own slice of wilderness.



Essential Information

MLS® #	A2236486
Price	\$189,000
Bathrooms	0.00

Acres	1.00
Type	Land
Sub-Type	Residential Land
Status	Active

Community Information

Address	32529 Range Road 52
Subdivision	NONE
City	Rural Mountain View County
County	Mountain View County
Province	Alberta
Postal Code	T0M 1X0

Amenities

Amenities	Other
-----------	-------

Additional Information

Date Listed	July 3rd, 2025
Days on Market	73
Zoning	12

Listing Details

Listing Office	CIR Realty
----------------	------------

Data is supplied by Pillar 9â„¢ MLS® System. Pillar 9â„¢ is the owner of the copyright in its MLS® System. Data is deemed reliable but is not guaranteed accurate by Pillar 9â„¢. The trademarks MLS®, Multiple Listing Service® and the associated logos are owned by The Canadian Real Estate Association (CREA) and identify the quality of services provided by real estate professionals who are members of CREA. Used under license.