

# \$649,000 - 36 St Andrews Close, Lyalta

MLS® #A2235254

**\$649,000**

3 Bedroom, 3.00 Bathroom, 2,017 sqft

Residential on 0.10 Acres

Lakes of Muirfield, Lyalta, Alberta

Modern Duplex in Lyalta with Scenic Views \*\*\*

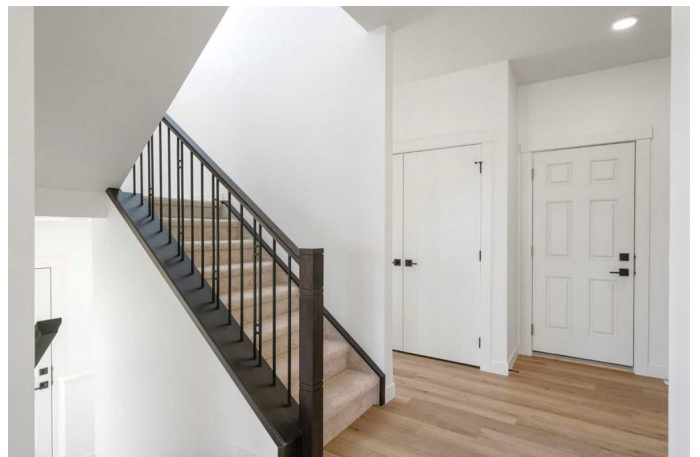
OPEN HOUSE SATURDAY July 26TH NOON

- 2:00PM\*\*\*

Welcome to this stunning, newly built duplex on a large lot in the peaceful community of Lyalta, Alberta. The sleek grey exterior with a striking black accents & roof give this home a contemporary look, while the bright, airy interior featuring white walls, soft cream carpets create a warm and inviting interior atmosphere.

The open-concept main floor is designed for both comfort and style. The kitchen boasts stainless steel appliances, including a cooktop, refrigerator, microwave, wall oven and dishwasher. Ample white cabinetry on walls plus island provides plenty of storage, and the adjacent dining area offers a lovely view of the reservoir ponds behind the house! The spacious living room is centered around a stunning electric fireplace, creating a welcoming space for relaxation and entertaining.

The entryway features a private office, a convenient 2-piece powder room, and a generous closet for extra storage. The two-car, insulated, and drywalled garage offers easy access and additional storage options.



Upstairs, youâ€™ll find three generously sized bedrooms, each filled with natural light thanks to large windows. The primary bedroom is a true sanctuary, with a spacious walk-in closet and a luxurious 5-piece ensuite featuring his-and-her sinks, a stand alone bathtub, walk-in shower, and a private toilet. Enjoy a tranquil view of the water from your bedroom every day. The two additional bedrooms share another beautifully appointed 5-piece bathroom, and all three rooms are conveniently located near the upstairs laundry room and a cozy second family room.

The full-sized, unfinished basement is ready for your personal touch, with a rough-in for a bathroom and endless possibilities for future expansion. This home features quality materials throughout, such as solid core doors, upgraded carpet and fiber cement siding.

Located just a short walk from a local golf course, this home offers the perfect combination of modern living and natural tranquility. Come see this beautiful duplex for yourself and discover all it has to offer!

Built in 2025

**Essential Information**

MLS® #	A2235254
Price	\$649,000
Bedrooms	3
Bathrooms	3.00
Full Baths	2
Half Baths	1
Square Footage	2,017
Acres	0.10
Year Built	2025

Type	Residential
Sub-Type	Semi Detached
Style	2 Storey, Side by Side
Status	Active

### Community Information

Address	36 St Andrews Close
Subdivision	Lakes of Muirfield
City	Lyalta
County	Wheatland County
Province	Alberta
Postal Code	T0J1Y1

### Amenities

Amenities	None
Parking Spaces	4
Parking	Concrete Driveway, Double Garage Attached, Driveway, Garage Door Opener, Garage Faces Front, Insulated
# of Garages	2
Waterfront	See Remarks

### Interior

Interior Features	Double Vanity, High Ceilings, Kitchen Island, Soaking Tub
Appliances	Dishwasher, Electric Cooktop, Microwave, Range Hood, Refrigerator, Oven
Heating	Forced Air, Natural Gas
Cooling	None
Fireplace	Yes
# of Fireplaces	1
Fireplaces	Electric, Living Room, Decorative
Has Basement	Yes
Basement	Full, Unfinished

### Exterior

Exterior Features	None
Lot Description	Cul-De-Sac, Rectangular Lot
Roof	Asphalt Shingle
Construction	Cement Fiber Board, Concrete
Foundation	Poured Concrete

**Additional Information**

Date Listed	July 9th, 2025
Days on Market	12
Zoning	DC-7
HOA Fees	85
HOA Fees Freq.	MON

**Listing Details**

Listing Office	Cash Back Real Estate Inc.
----------------	----------------------------

Data is supplied by Pillar 9â„¢ MLS® System. Pillar 9â„¢ is the owner of the copyright in its MLS® System. Data is deemed reliable but is not guaranteed accurate by Pillar 9â„¢. The trademarks MLS®, Multiple Listing Service® and the associated logos are owned by The Canadian Real Estate Association (CREA) and identify the quality of services provided by real estate professionals who are members of CREA. Used under license.