

# \$330,000 - 4802 16 Street, Lloydminster

MLS® #A2234448

**\$330,000**

4 Bedroom, 3.00 Bathroom, 1,144 sqft

Residential on 0.12 Acres

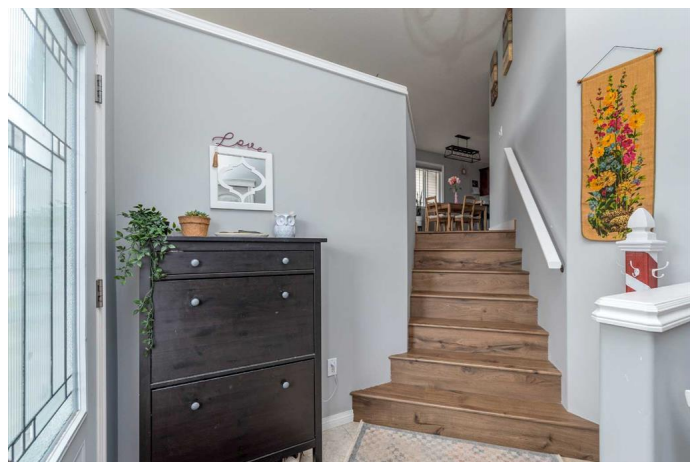
Wallacefield, Lloydminster, Saskatchewan

Step into this bright and stylish home featuring an open-concept main floor flooded with natural light. The spacious living room seamlessly flows into the dining area and a modern kitchen complete with quartz countertops, a sit-up breakfast bar, ample cabinetry, and generous counter space. The main floor offers two bedrooms and two bathrooms, including a spacious primary suite with a large walk-in closet and a full ensuite. The fully finished basement offers suite potential with a full kitchenette, large windows that brighten the expansive family room, a four-piece bathroom, and two additional bedroomsâ€”perfect for guests or rental income. Further highlights include central AC , ample parking, RV parking potential, and a fully landscaped yard with a storage shed and a large deck to appreciate all summer. Donâ€™t miss this incredible opportunityâ€”check out the 3D virtual tour today!

Built in 2012

## Essential Information

|                |           |
|----------------|-----------|
| MLS® #         | A2234448  |
| Price          | \$330,000 |
| Bedrooms       | 4         |
| Bathrooms      | 3.00      |
| Full Baths     | 3         |
| Square Footage | 1,144     |



|            |             |
|------------|-------------|
| Acres      | 0.12        |
| Year Built | 2012        |
| Type       | Residential |
| Sub-Type   | Detached    |
| Style      | Bi-Level    |
| Status     | Active      |

### **Community Information**

|             |                |
|-------------|----------------|
| Address     | 4802 16 Street |
| Subdivision | Wallacefield   |
| City        | Lloydminster   |
| County      | Lloydminster   |
| Province    | Saskatchewan   |
| Postal Code | S9V 1X1        |

### **Amenities**

|                |  |
|----------------|--|
| Parking Spaces | 2  |
| Parking        | Concrete Driveway, Off Street, RV Access/Parking |

### **Interior**

|                   |   |
|-------------------|---|
| Interior Features | Open Floorplan, Quartz Counters, Storage, Walk-In Closet(s) |
| Appliances        | Dishwasher, Refrigerator, Stove(s), Washer/Dryer            |
| Heating           | Forced Air, Natural Gas                                     |
| Cooling           | Central Air   |
| Has Basement      | Yes   |
| Basement          | Finished, Full  |

### **Exterior**

|                   |  |
|-------------------|--|
| Exterior Features | Private Yard, Storage                                  |
| Lot Description   | Back Yard, City Lot, Front Yard, Lawn, Rectangular Lot |
| Roof              | Asphalt Shingle  |
| Construction      | Vinyl Siding   |
| Foundation        | Wood   |

### **Additional Information**

|                |                 |
|----------------|-----------------|
| Date Listed    | June 23rd, 2025 |
| Days on Market | 15              |
| Zoning         | R1              |

### **Listing Details**

Listing Office

CENTURY 21 DRIVE

Data is supplied by Pillar 9â„¢ MLSÂ® System. Pillar 9â„¢ is the owner of the copyright in its MLSÂ® System. Data is deemed reliable but is not guaranteed accurate by Pillar 9â„¢. The trademarks MLSÂ®, Multiple Listing ServiceÂ® and the associated logos are owned by The Canadian Real Estate Association (CREA) and identify the quality of services provided by real estate professionals who are members of CREA. Used under license.