

# \$399,900 - 6022 88 Street, Grande Prairie

MLS® #A2233987

**\$399,900**

4 Bedroom, 3.00 Bathroom, 1,160 sqft

Residential on 0.11 Acres

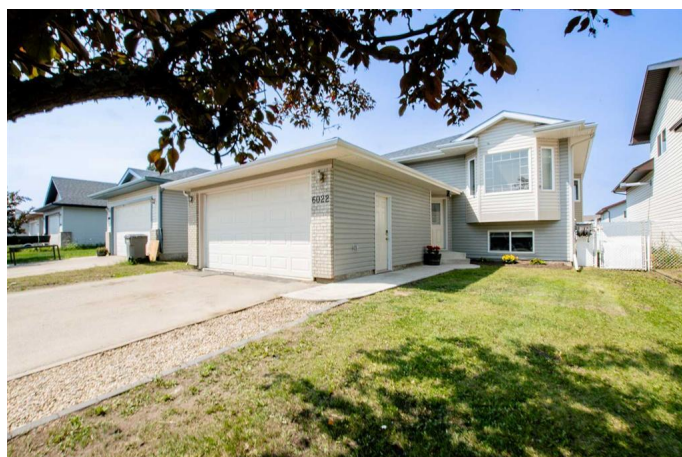
Countryside South., Grande Prairie, Alberta

Welcome to the perfect family home nestled in the heart of Countryside South. Ideally located just steps from parks, walking trails, and green spaces. This gem backs onto an easement, offering added privacy. Inside, the main floor features three comfortable bedrooms, including a primary suite with its own ensuite bathroom. The spacious kitchen opens onto a covered deck – perfect for summer BBQs and morning coffee – and flows seamlessly into a bright and inviting living room where the whole family can unwind. Downstairs, the finished basement offers a generous living area, an additional bedroom, a large office or flex room to suit your lifestyle, a huge oversized laundry room, and ample storage space to keep everything organized. The backyard is fully fenced and landscaped, ready for kids, pets, or entertaining. This home checks all the boxes for a growing family looking for comfort, convenience, and space to thrive. Message your favourite agent to view before it's too late!

Built in 2004

## Essential Information

MLS® #	A2233987
Price	\$399,900
Bedrooms	4
Bathrooms	3.00
Full Baths	3



Square Footage	1,160
Acres	0.11
Year Built	2004
Type	Residential
Sub-Type	Detached
Style	Bi-Level
Status	Active

### **Community Information**

Address	6022 88 Street
Subdivision	Countryside South.
City	Grande Prairie
County	Grande Prairie
Province	Alberta
Postal Code	T8W 2V2

### **Amenities**

Parking Spaces	4
Parking	Double Garage Attached, Parking Pad
# of Garages	2

### **Interior**

Interior Features	Central Vacuum, High Ceilings, No Smoking Home, Open Floorplan, Pantry, Recessed Lighting, Sump Pump(s)
Appliances	Dishwasher, Microwave, Oven, Washer/Dryer
Heating	Forced Air, Natural Gas
Cooling	None
Has Basement	Yes
Basement	Finished, Full

### **Exterior**

Exterior Features	Garden, Lighting, Private Yard, Storage
Lot Description	Back Yard, Front Yard, Garden, Landscaped, Lawn, Rectangular Lot
Roof	Asphalt Shingle
Construction	Stone, Vinyl Siding
Foundation	Poured Concrete

### **Additional Information**

Date Listed	June 23rd, 2025
-------------	-----------------

Days on Market	11
Zoning	RS

## **Listing Details**

Listing Office	RE/MAX Grande Prairie
----------------	-----------------------

Data is supplied by Pillar 9â„¢ MLS® System. Pillar 9â„¢ is the owner of the copyright in its MLS® System. Data is deemed reliable but is not guaranteed accurate by Pillar 9â„¢. The trademarks MLS®, Multiple Listing Service® and the associated logos are owned by The Canadian Real Estate Association (CREA) and identify the quality of services provided by real estate professionals who are members of CREA. Used under license.